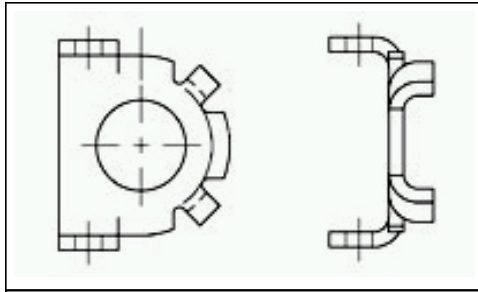


## 552101 -3 Product Details

**Live Product Chat** US Only  
8:30am - 5pm ET, Mon - Fri



**552101 -3**

✓ [Active](#)

### 2.16 [.085] Accessories and Hardware

[Always EU RoHS/ELV Compliant](#) ( [Statement of Compliance](#) )

**Product Highlights:**

- ? Mounting Bracket
- ? Cable -to -Cable Application, Panel Mount Application

[View all Features](#) | [Find Similar Products](#)

#### Quick Links

- [Check Pricing & Availability](#)
- [Search for Tooling](#)
- [Product Feature Selector](#)
- [Contact Us About This Product](#)

#### Documentation & Additional Information

**Product Drawings:**

- ? [MOUNTING BRACKER, BAIL](#) (PDF, English)

**Catalog Pages/Data Sheets:**

- ? None Available

**Product Specifications:**

- ? None Available

**Application Specifications:**

- ? None Available

**Instruction Sheets:**

- ? None Available

**CAD Files:**

- ? None Available

**Additional Information:**

- ? [Product Line Information](#)

**Related Products:**

- ? [Tooling](#)

[List all Documents](#)

#### Product Features (Please use the Product Drawing for all design activity)

**Product Type Features:**

- ? [Product Type](#) = Mounting Bracket
- ? For Use With = Double Row Receptacle Assemblies
- ? Material = Carbon Steel
- ? Comment = 2 of each part required.; With clear trivalent chromate film.

**Industry Standards:**

- ? [RoHS/ELV Compliance](#) = RoHS compliant, ELV compliant
- ? [Lead Free Solder Processes](#) = Not relevant for lead free process
- ? RoHS/ELV Compliance History = Always was RoHS compliant

**Operation/Application:**

- ? [Application](#) = Cable -to -Cable, Panel Mount

**Other:**

- ? Brand = AMP