

NOTES:

- MATERIAL:
HOUSING: LCP WITH 30% GF, UL94 V-0, BLACK COLOR.
CONTACTS: PHOSPHOR BRONZE.
PEGS: BRASS.
- FINISH:
CONTACTS: (SEE TABLE) GOLD PLATED ON CONTACT AREA, WITH GOLD FLASH OVER 1.27µm [50µ"] MIN. NICKEL ON ENTIRE CONTACT.
PEGS: 3.048µm [120µ"] MIN. MATTE-TIN OVER 1.27µm [50µ"] MIN. NICKEL.
- REFLOW SOLDER CAPABLE TO 260° PER TE TEST SPEC. 109-201, CONDITION B.

LOC	DIST	REVISIONS					
DW	-	F	LYR	DESCRIPTION	DATE	DM	APD
		F		REVISED.(ECR-13-007587)	30OCT13	SW	WK

PCI-E MINI CARD CONNECTOR SIGNAL ASSIGNMENTS

PIN#	NAME	PIN#	NAME
51	Reserved	52	+3.3Vaux
49	Reserved	50	GND
47	Reserved	48	+1.5V
45	Reserved	46	LED_WPAN#
43	GND	44	LED_WLAN#
41	+3.3Vaux	42	LED_WWAN#
39	+3.3Vaux	40	GND
37	GND	38	USB_D+
35	GND	36	USB_D-
33	PETp0	34	GND
31	PETn0	32	SMB_DATA
29	GND	30	SMB_CLK
27	GND	28	+1.5V
25	PERp0	26	GND
23	PERn0	24	+3.3Vaux
21	GND	22	PERST#
19	Reserved* (UIM_C4)	20	W_DISABLE#
17	Reserved* (UIM_C8)	18	GND

MECHANICAL KEY			
15	GND	16	UIM_VPP
13	REFCLK+	14	UIM_RESET
11	REFCLK-	12	UIM_CLK
9	GND	10	UIM_DATA
7	CLKREQ#	8	UIM_PWR
5	COEX2	6	1.5V
3	COEX1	4	GND
1	WAKE#	2	3.3Vaux

* Reserved for future UIM interface (if needed)

mSATA CONNECTOR SIGNAL ASSIGNMENTS

PIN#	NAME	PIN#	NAME
51	Presence Defection	52	+3.3V
49	DA/DSS	50	GND
47	Vendor	48	+1.5V
45	Vendor	46	Reserved
43	No Connect	44	Reserved
41	+3.3V	42	Reserved
39	+3.3V	40	GND
37	GND	38	Reserved
35	GND	36	Reserved
33	+A	34	GND
31	-A	32	Two Wire Interface
29	GND	30	Two Wire Interface
27	GND	28	+1.5V
25	-B	26	GND
23	+B	24	+3.3V
21	GND	22	Reserved
19	Reserved	20	Reserved
17	Reserved	18	GND

MECHANICAL KEY			
15	GND	16	Reserved
13	Reserved	14	Reserved
11	Reserved	12	Reserved
9	GND	10	Reserved
7	Reserved	8	Reserved
5	Reserved	6	+1.5V
3	Reserved	4	GND
1	Reserved	2	+3.3V

OBSOLETE	TYPE II	0.254µm [10µ"]	1775838-3
	TYPE I	GOLD FLASH	1775838-2
		0.254µm [10µ"]	-1775838-1
PACKING TYPE	MIN. GOLD THICKNESS	PART NUMBER	

THIS DRAWING IS A CONTROLLED DOCUMENT.

<p>APPROVED: W. KODAMA</p> <p>PRODUCT SPEC: 108-99102</p> <p>APPLICATION SPEC: -</p>	<p>DATE: 25SEP2009</p> <p>NAME: -</p> <p>SIZE: A2</p> <p>WEIGHT: 1.172 GRAMS</p> <p>CUSTOMER DRAWING</p>	<p>DATE: 25SEP2009</p> <p>NAME: -</p> <p>SIZE: A2</p> <p>WEIGHT: 1.172 GRAMS</p> <p>CUSTOMER DRAWING</p>	<p>DATE: 25SEP2009</p> <p>NAME: -</p> <p>SIZE: A2</p> <p>WEIGHT: 1.172 GRAMS</p> <p>CUSTOMER DRAWING</p>	<p>DATE: 25SEP2009</p> <p>NAME: -</p> <p>SIZE: A2</p> <p>WEIGHT: 1.172 GRAMS</p> <p>CUSTOMER DRAWING</p>
--------------------------------------------------------------------------------------	----------------------------------------------------------------------------------------------------------	----------------------------------------------------------------------------------------------------------	----------------------------------------------------------------------------------------------------------	----------------------------------------------------------------------------------------------------------

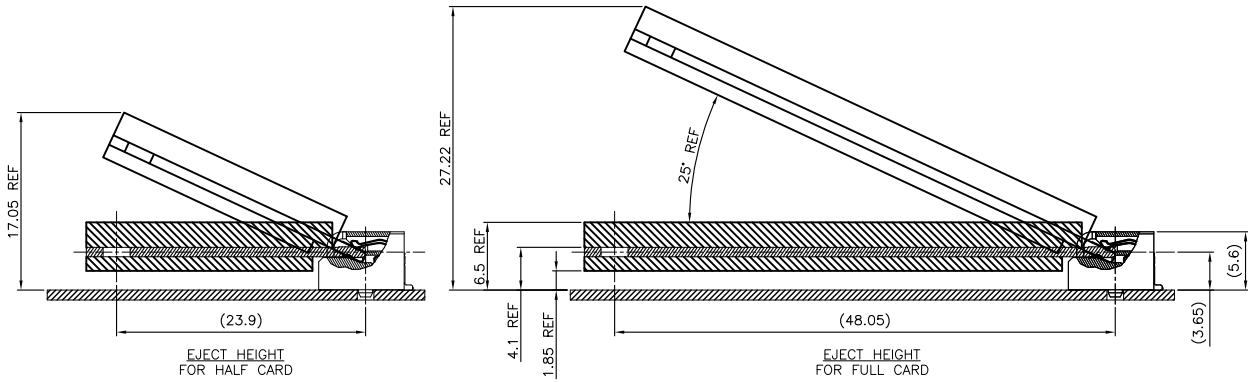
TE Connectivity

2 IN 1 mSATA & PCI EXPRESS MINI CARD CONNECTOR, 5.6 MM HEIGHT

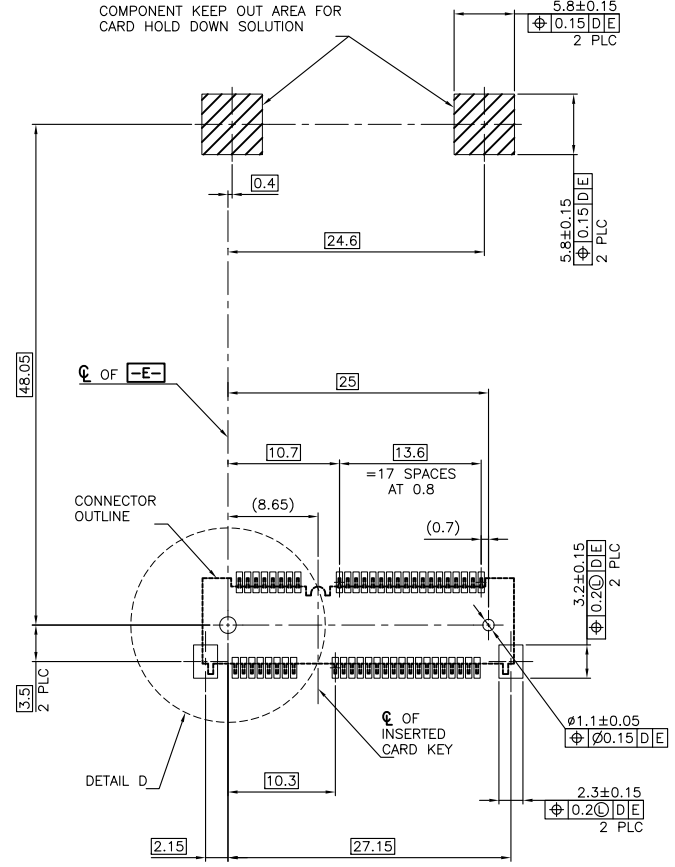
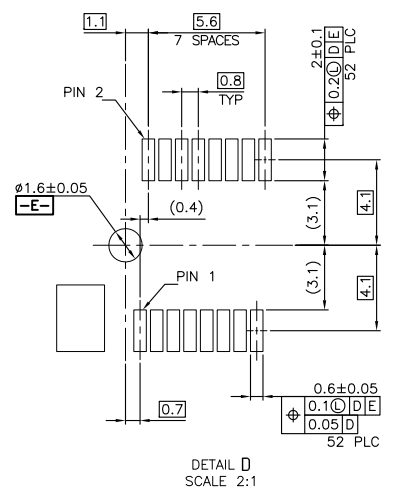
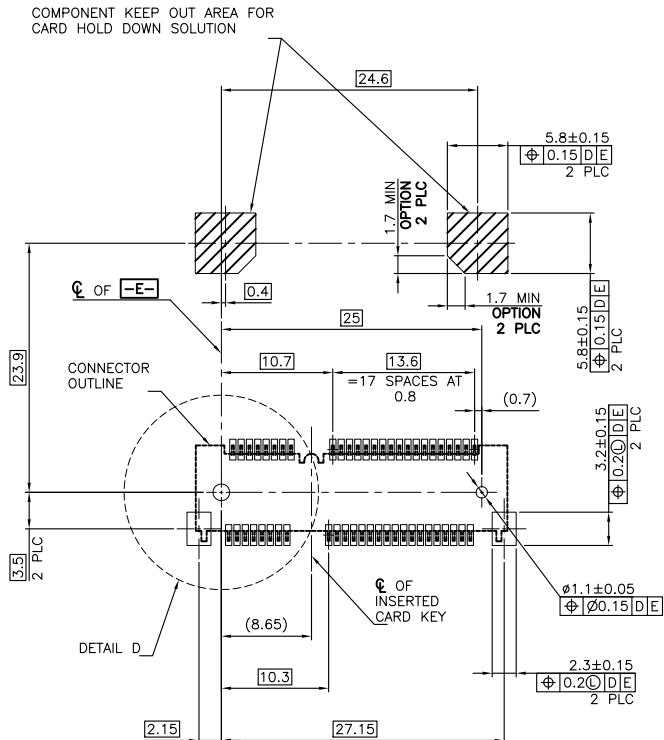
SCALE: 1 OF 5

THIS DRAWING IS UNPUBLISHED. RELEASED FOR PUBLICATION
 © COPYRIGHT 2011 BY TE CONNECTIVITY. ALL RIGHTS RESERVED.

LOC		DIST		REVISIONS			
P	LYR	DATE	DMN	APVD	DESCRIPTION	DATE	DMN
SEE SHEET 1							



COMPONENT KEEP OUT AREA FOR CARD HOLD DOWN SOLUTION

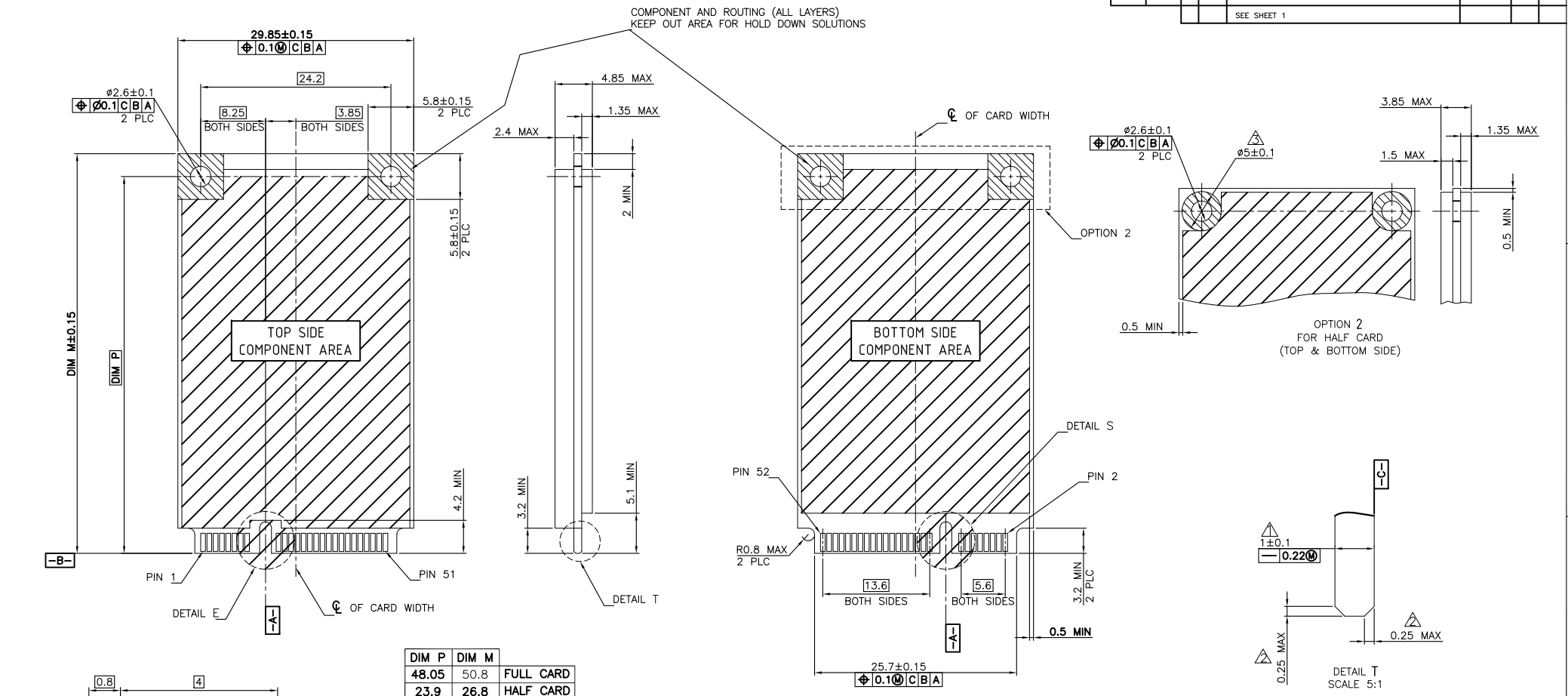


-D- IS THE TOP SURFACE OF PCB.
 RECOMMENDED P.C. BOARD PATTERN LAYOUT FOR FULL CARD CONNECTOR (TOP VIEW)

-D- IS THE TOP SURFACE OF PCB.
 RECOMMENDED P.C. BOARD PATTERN LAYOUT FOR HALF CARD CONNECTOR (TOP VIEW)

THIS DRAWING IS A CONTROLLED DOCUMENT.		DMN	TE Connectivity	
DIMENSIONS: MM		CHK	NAME	
TOLERANCES UNLESS OTHERWISE SPECIFIED:		APVD	PRODUCT SPEC	
0 PLC ±		APPLICATION SPEC		
1 PLC ±		SIZE		
2 PLC ±		CAGE CODE		
3 PLC ±		DRAWING NO		
4 PLC ±		RESTRICTED TO		
ANGLES ±		A2 00779 C=1775838		
MATERIAL		CUSTOMER DRAWING		
FINISH		SCALE		
		SHEET 2 of 5		
		REV F		

LOC		DIST		REVISIONS			
P	LYR	DESCRIPTION	DATE	DM	APD		
DW		-		SEE SHEET 1			



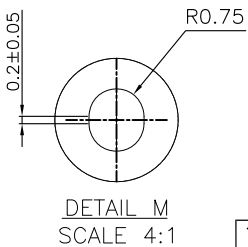
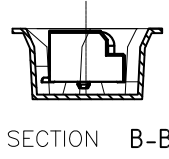
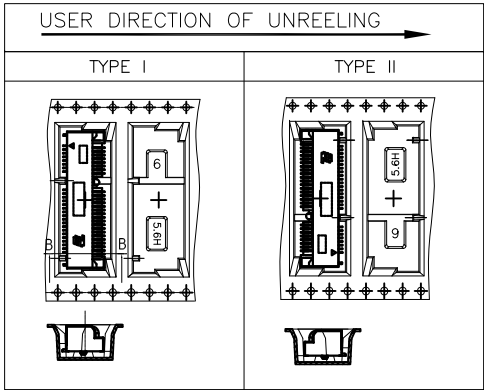
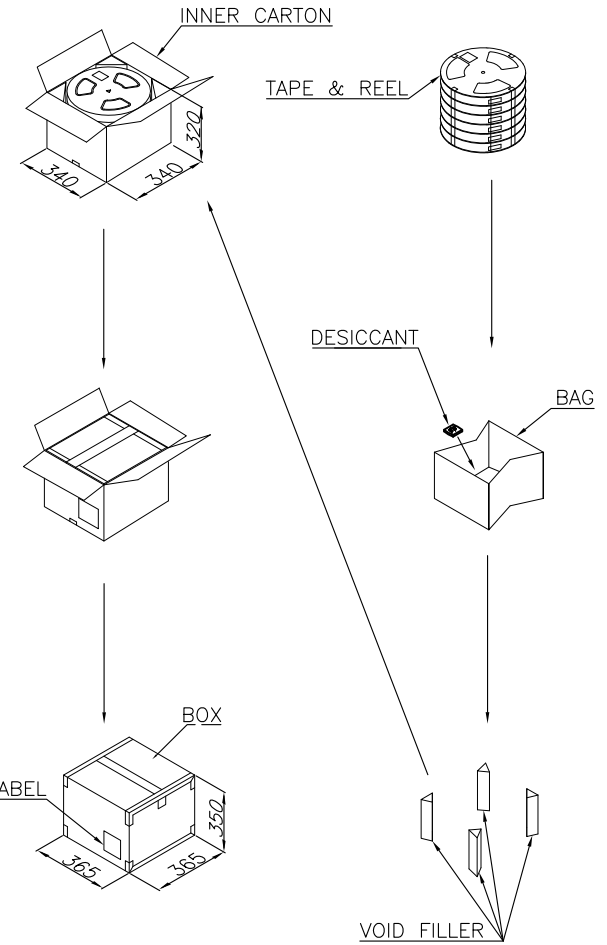
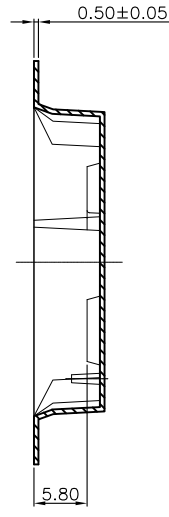
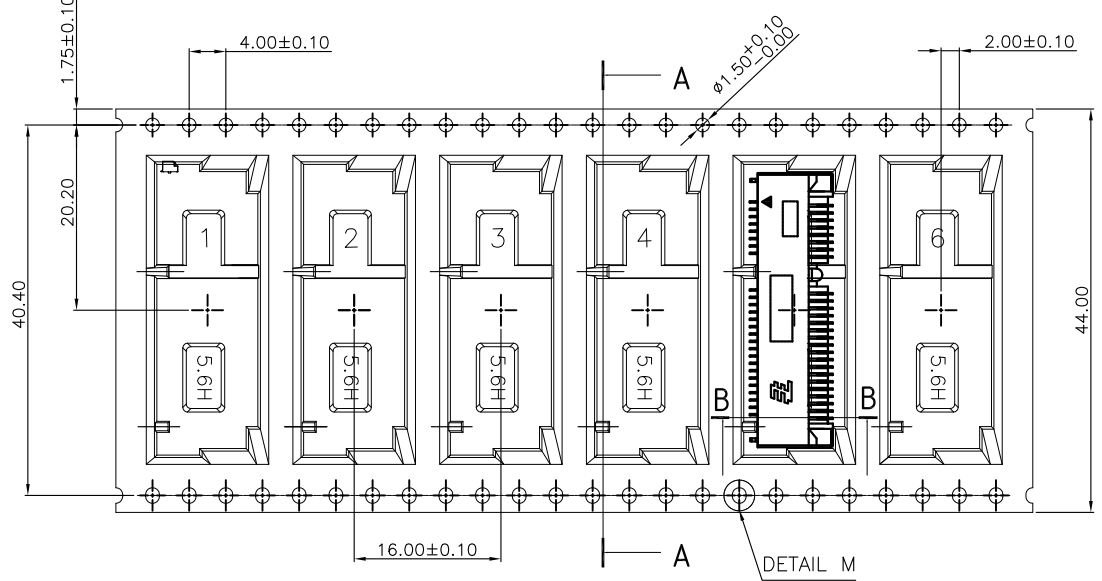
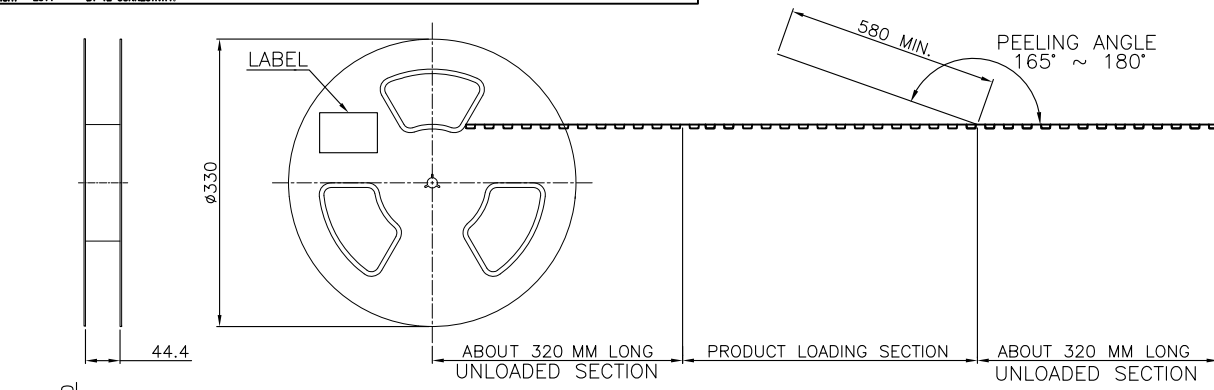
- NOTES:
- ▲ CARD THICKNESS APPLIES ACROSS TABS AND INCLUDES PLATING AND/OR METALLIZATION.
 - ▲ EDGE BEVEL MUST BE PRESENT AND FREE OF CUTTING BURRS FROM PCB AND CONTACT MATERIALS.
 - ▲ COMPONENT AND ROUTING (TOP/BOTTOM LAYER) KEEP OUT AREA FOR HOLD DOWN SOLUTIONS.

FOR mSATA

THIS DRAWING IS A CONTROLLED DOCUMENT.		DM	TE Connectivity	
DIMENSIONS: MM		CHK	NAME	
TOLERANCES UNLESS OTHERWISE SPECIFIED		APD	PRODUCT SPEC	
0 PLC ±		APPLICATION SPEC		
1 PLC ±		SIZE	CAGE CODE	DRAWING NO
2 PLC ±		A2	00779	C=1775838
3 PLC ±		RESTRICTED TO		
4 PLC ±		CUSTOMER DRAWING		
ANGLES ±		SCALE	SHEET	REV
FINISH		-	4 of 5	F

THIS DRAWING IS UNPUBLISHED. RELEASED FOR PUBLICATION
 © COPYRIGHT 2011 BY TE CONNECTIVITY. ALL RIGHTS RESERVED.

LOC	DIST	REVISIONS					
DW		P	LYR	DESCRIPTION	DATE	DM	APD
				SEE SHEET 1			



3000 PCS	500	6	9.86	4.98
QUANTITY	PCS/TAPE	REELS/BOX	G/W(Kg)	N/W(Kg)

THIS DRAWING IS A CONTROLLED DOCUMENT.		DM	TE Connectivity		
DIMENSIONS: MM		CHK	NAME		
TOLERANCES UNLESS OTHERWISE SPECIFIED:		APD	PRODUCT SPEC		
0 PLC ±		APPLICATION SPEC			
1 PLC ±		WEIGHT			
2 PLC ±		CUSTOMER DRAWING			
3 PLC ±		SCALE			
4 PLC ±		SHEET			
ANGLES ±		5 of 5			
FINISH ±		REV F			
MATERIAL		SIZE	CAGE CODE	DRAWING NO	RESTRICTED TO
		A2	00779	C=1775838	