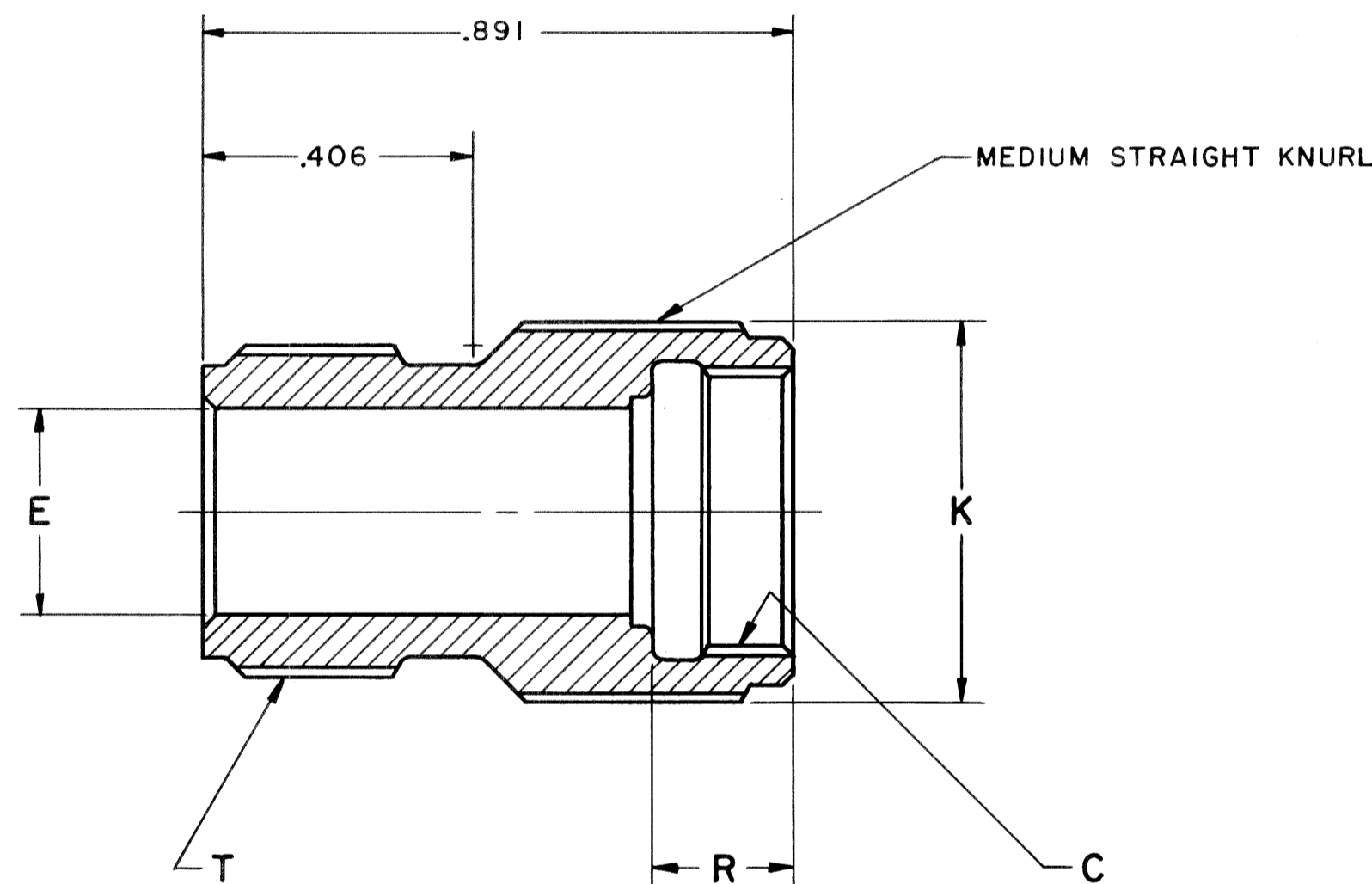


PART NUMBER	C THREAD CLASS 2B	E DIA ±.005	K DIA MAX	R +.000 -.010	T THREAD CLASS 2A	RELEASE	MADE FROM
10-123011-6	.3125-32 UNEF	.190	.469	.215	.3750-32 UNEF	31508-287	10-123011-6B
-8	.4375-28 UNEF	.312	.594		.5000-28 UNEF		-8B
-10	.5625-24 UNEF	.436	.719		.6250-24 UNEF		-10B
-12	.6875-24 UNEF	.561	.844		.7500-20 UNEF		-12B
-14	.8125-20 UNEF	.678	.969		.8750-20 UNEF		-14B
-16	.9375-20 UNEF	.802	1.094		1.0000-20 UNEF		-16B
-18	1.0625-18 UNEF	.894	1.219		1.1875-18 UNEF		-18B
-20	1.1875-18 UNEF	1.029	1.312	.312	1.1875-18 UNEF		-20B
-22	1.3125-18 UNEF	1.150	1.469		1.4375-18 UNEF		-22B
-24	1.4375-18 UNEF	1.274	1.594		1.4375-18 UNEF	33524-599	-24B

REL NO. 31508-287		REVISIONS			
CHG NO.	SYM	DESCRIPTION	DATE	APPROVED	
43525-746	A1	REDRAWN, WAS SIZE "B" TYPE WRITTEN; PROVIDED ENVELOPE DWG	11-21-64	W. GAY	
47524-170	A2	ADD & REL -XX9 FINISH	11-16-65	W. GAY	
55524-58	A3	ADD & REL -XXG FINISH	11-16-65	W. GAY	
72024-54	B	(CLII) ADD & REL -XX7 FINISH	5/12/81	W. GAY	
76484-1	C	(CLII) ADDED MADE FROM COLUMN	11-2-66	W. GAY	
80-44-1	D	(CLII) ADD & REL -XX7 FINISH TO NOTE 1	9-1-69	W. GAY	
82906	E	(CLII) ADD & REL -XXY FINISH	3-5-97	J. G. B.	
85035	F	ADD AND REL -XXY FINISH TO COLUMN	10/1/93	J. G. B.	
85448	G	(CLII) SEE ECN: 85448	4-27-99	J. G. B.	
86546	H	(CLII) ADD & RELEASE -XXU FINISH & DATA	4-28-99	J. G. B.	
C2018	J	SEE ECN C2018	3/16	Prescott	



3. REF SYMBOL

2. THREADS ARE IN ACCORDANCE WITH FEDERAL HANDBOOK H-28.

1. TO COMPLETE PART NO., ADD APPLICABLE LAST DIGIT TO SUFFIX FOR DESIRED FINISH.

CHROMATE TREAT	SUFFIX -XX0	9-3350
CADMIUM PLATE	SUFFIX -XX1	9-2158
BLACK ANODIZE	SUFFIX -XX2	9-3487
CADMIUM PLATE OLIVE DRAB	SUFFIX -XX3	9-3047
GREY ANODIZE	SUFFIX -XX4	9-3487
ANODIC COATING	SUFFIX -XX5	9-3290
BRIGHT CADMIUM PLATE, NICKEL BASE	SUFFIX -XX7	9-4332
NICKEL ALLOY PLATE	SUFFIX -XXG	9-6914
CAD PLATE, O.D., NICKEL BASE	SUFFIX -XX9	9-4960
BRIGHT NICKEL	SUFFIX -XX8	9-3435
BLACK ZINC ALLOY PLATE	SUFFIX -XXY	9-9181
BLACK ZINC CONDUCTIVE	SUFFIX -XXX	9-9181-1
GREEN ZINC ALLOY PLATE	SUFFIX -XXU	9-9263
GRAY ZINC NICKEL	SUFFIX -XXFL	C9-9422-FL

NOTES:

USE OF THIS DOCUMENT IS UNLIMITED. DOCUMENTS REFERENCED HEREON CONTAIN LIMITED RIGHTS DATA.

ITEM NO.	QTY REQD	DESCRIPTION	PART NUMBER	CODE IDENT	ZONE
PARTS LIST					
UNLESS OTHERWISE SPECIFIED					
LINEAR DIMENSIONS ARE IN INCHES. TOLERANCES: 3 PLACES ±.010; 2 PLACES ±.03; 1 PLACE ±.1; ANGLES ±2°. OTHER STANDARDS PER SCINTILLA SPEC 9-3800 AND MIL-STD 8.		DRAWN: HAYES DATE: 7-12-56	SCINTILLA DIVISION		
		CHECKED: Teelon DATE: 4-7-65	CORPORATION SIDNEY, NEW YORK, U.S.A.		
MATERIAL SPEC ALUMINUM ALLOY		MATERIAL:	TITLE: ADAPTER, ELECTRICAL CONNECTOR, TYPE PB(), (ENVELOPE DRAWING)		
PROCESS SPEC		STANDARDS: Balantini 4-7-65	CODE IDENT NO. SIZE		
		DRAFTING: D Sweet 4-7-65	77820 C 10-123011		
		ENGINEERING: W. G. Harrison 4.7.65	SCALE NONE WT REF SHEET		
		DEVELOPMENT:			