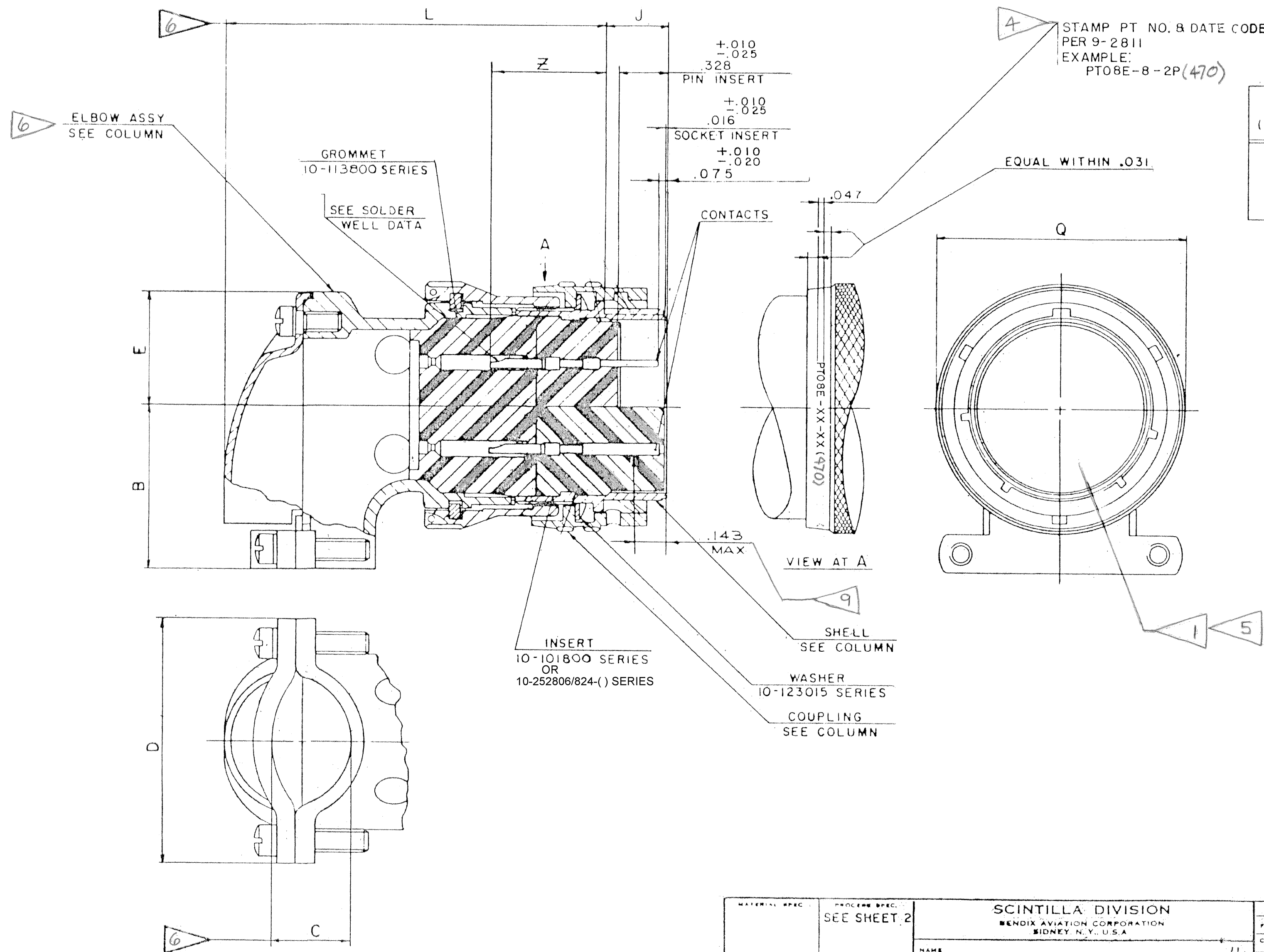


REV	DESCRIPTION	DATE	APP'D
A	INITIAL RELEASE NO: 70095-361		
B	(CL II) ADDED 10-252806/824-() SERIES ECN: A5148	7-3-08	H.BROOKER



ACCESSORIES  
(NOT PART OF STANDARD ASSEMBLY)

SEE DRAWING  
10-150000

10-574180/189

USE OF THIS DOCUMENT IS UNLIMITED. DOCUMENTS REFERENCED HEREON CONTAIN LIMITED RIGHTS DATA.

SEE SHEET 2  
NOTES REF SYMBOL

MATERIAL SPEC.		PROCESS SPEC.		SCINTILLA DIVISION		TOLERANCES UNLESS OTHERWISE SPECIFIED	
		SEE SHEET 2		BENDIX AVIATION CORPORATION SIDNEY, N.Y., U.S.A.		FRACTIONS	DECIMALS ± .010
				CONNECTOR, ELECTRICAL PLUG TYPE PTE (I) MC, 90° BLACK ZINC COBALT		CONCENTRICITY	SURFACE ROUGHNESS
						NEXT ASSEMBLY	WEIGHT - LBS
						SUPERSEDES AND IS NOT INTERCHANGEABLE	
						SUPERSEDED BY	
						10-574180/189	
						SHEET 1 OF 2	
						CODE 77820 TAB	

ASSEMBLY NUMBER	PT NO.	DETAILS			DIMENSIONS								
		SHELL	COUPLING	ELBOW ASSEMBLY	B ±.031	C +.010 -.020	D ±.062	E ±.025	J	L ±.047	Q DIA MAX	Z ±.035	
10-574180-	08E-6-	(A70)				NOT	AVAILABLE						
10-574181-	-8-		10-184961-8Y	10-123016-7Y	10-184964-8Y	.655	.156	.941	.339	.353	1.433	.796	.525
10-574182-	-10-		-10Y	-9Y	-10Y	.749	.169	1.191	.393		1.527	.921	
10-574183-	-12-		-12Y	-12Y	-12Y	.812	.264	1.191	.450		1.612	1.046	
10-574184-	-14-		-14Y	-14Y	-14Y	.905	.310	1.254	.519		1.760	1.171	
10-574185-	-16-		-16Y	-16Y	-16Y	1.030	.330	1.316	.583		1.962	1.297	
10-574186-	-18-		-18Y	-18Y	-18Y	1.015	.444	1.562	.621		2.070	1.422	
10-574187-	-20-		-20Y	-20Y	-20Y	1.077	.510	1.625	.683	.415	2.280	1.562	.619
10-574188-	-22-		-22Y	-22Y	-22Y	1.139	.515	1.719	.739		2.327	1.672	
10-574189-	-24-		-24Y	-24Y	-24Y	1.265	.656	1.751	.797		2.565	1.797	

2

10-574180/189

B

4. SEE WORK ORDER FOR PERMISSIBLE ADDITIONAL OR ALTERNATE STAMPING.

9. DISTANCE BETWEEN END OF SHELL & THE POINT AT WHICH A GAGE PIN, HAVING THE SAME BASIC DIAMETER AS THE MATING CONTACT & A SQUARE FACE ENGAGES SOCKET CONTACT SPRING.

8. ALL LOCKWIRE HOLES ARE .044 DIA MIN.

3. SEE SEPARATE PARTS LIST FOR COMPONENT PART NUMBERS, AND QUANTITIES.

2. TO COMPLETE ASSY NO. & PT NO., ADD APPLICABLE INSERT ARRANGEMENT SUFFIX TO BASE NUMBERS LISTED ABOVE PER 9-2437-1

7. ALL UNUSED GROMMET HOLES TO BE FILLED WITH GROMMET SEALING ROD OR GROMMET SEALING PLUGS. SEE DWG 10-150000(\*27+28)  
6. DIMENSIONS INDICATE FINAL INSTALLATION FOR STORAGE AND SHIPPING ELBOW ASSEMBLY. MAY BE LOOSELY COUPLED.

1. FOR CONTACT ARRANGEMENTS, SEE DRAWINGS L-15206-( ) THRU L-15250-( )

NOTES REF SYMBOL

5. INSERTS & CONTACTS MUST NOT BE REMOVED.

SOLDER WELL DATA			
CONTACT SIZE	20	16	
WELL DATA	.046 <sup>+0.04</sup> <sub>-.000</sub>	.078 <sup>+0.04</sup> <sub>-.002</sub>	
WELL DEPTH	±.031 -.000	.125	.188

MATERIAL SPEC	PROCESS SPEC TEST 9-3353-2 ASSY 9-3443-2 9-2437-1 9-2811	SCINTILLA DIVISION BENDIX AVIATION CORPORATION SIDNEY, N.Y., U.S.A.	TOLERANCES UNLESS OTHERWISE SPECIFIED FRACTIONS 2 DECIMALS 2, 0.10 ANGLES 5
HEAT TREAT SPEC	FINISH SPEC	NAME CONNECTOR, ELECTRICAL PLUG, TYPE PTE ( ) MC, 90° BLACK ZINC COBALT	CONCENTRICITY TIR SURFACE ROUGHNESS MICRO IN RMS MAX
		REP 71-148806/50	10-574180/189 SHEET 2 OF 2

TAB. CODE 77820