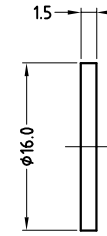
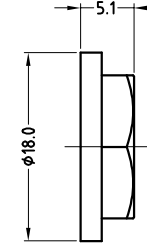


FIBRE WASHER

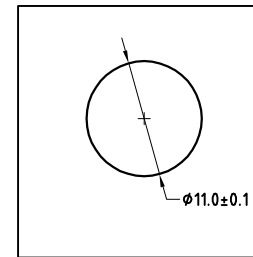
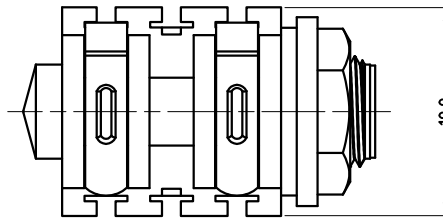
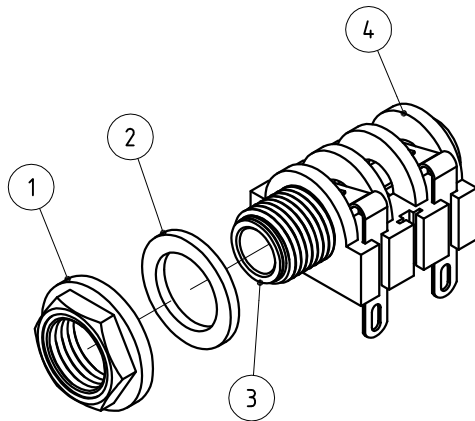
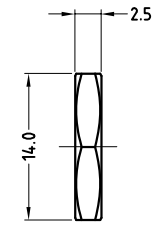


NUT OPTIONS

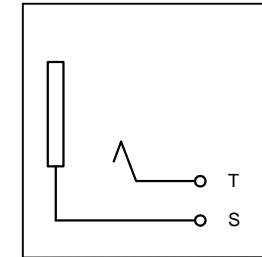
PLASTIC NUT



METAL NUT

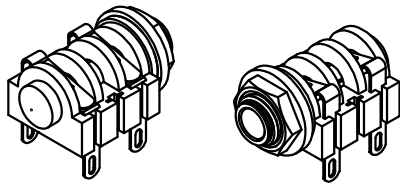


PANEL CUTOUT



SCHEMATIC

ITEM	DESCRIPTION
1	METAL/PLASTIC NUT
2	FIBRE WASHER
3	METAL TUBE INSERT
4	CONNECTOR ASSEMBLY



ISO VIEW

PART No.	CATALOG No.	DESCRIPTION
55010274-000	ACJM-MHSN	METAL NUT
55010274-001	ACJM-PHSN	PLASTIC NUT

UNLESS OTHERWISE SPECIFIED TOLERANCE TO BE	
LINEAR	ANGULAR
X ± 0.5	X° ± 1°
X.X ± 0.1	X°X' ± 30'
X.XX ± 0.05	X°X'X" ± 15"

THIS DOCUMENT IS THE PROPERTY OF AMPHENOL AUSTRALIA PTY. LTD. NO PART THEREOF MAY BE REPRODUCED AND USED WITHOUT THE PRIOR WRITTEN CONSENT OF THE OWNER

BREAK ALL SHARP EDGES AND REMOVE ALL BURRS

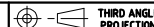
DO NOT SCALE

CAD FILE: 55010274.000111 DRN: L.V DATE: 22-10-03

MATL: REFER TO COMPONENT CKD: M.N.H DATE: 13-01-06

FINISH: REFER TO COMPONENT APP'D: P.M DATE: 13-01-06

DIMENSIONS IN MILLIMETRES



SCALE: 2:1 UOS

REV.	CHANGE DETAILS	BY	DATE	CHG/No
1	CHANGE DRAWING NUMBER & PART VARIATION NUMBER UPDATE DRAWING TO CURRENT PART	L.V	07-07-04	8293
0	FIRST ISSUE	L.V	22-10-03	----

TITLE:
**1/4" MONO JACK
NON-SWITCHING
CUSTOMER DRAWING**

Amphenol
Amphenol Australia Pty Ltd, 2 Fineways Blvd, Keysborough, Vic 3173
DRAWING NO. SHEET

PART No: REFER TO TABLE SIZE: A3 55010274-000-1 1 OF 1