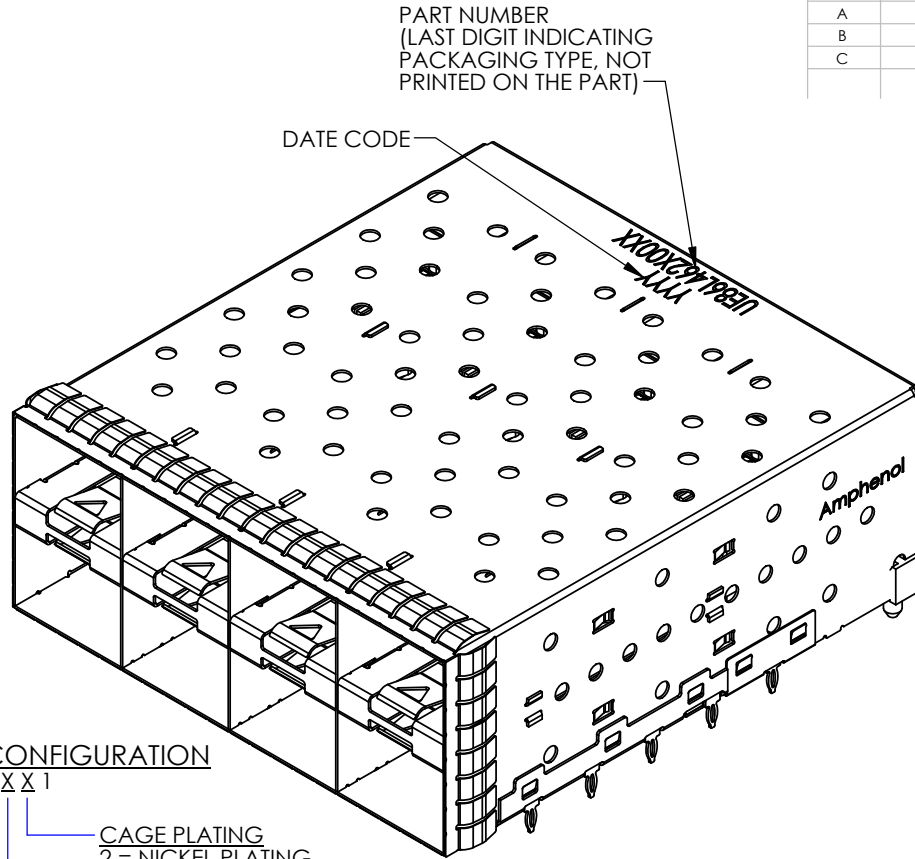




REVISIONS				
REV.	ECN	DESCRIPTION	DATE	APPROVED
A		PROPOSAL	May.15.11	J.SI
B		PROPOSAL	AUG.15.12	J.SI
C		OPTION 2 AND OPTION 5 ADDED	AUG.22.13	J.SI



AMPHENOL PART NUMBER CONFIGURATION
UE86 - L 4 6 2 7 - 0 0 X X 1

CAGE PLATING
2 = NICKEL PLATING
3 = MATTE TIN

PRESS FIT CONNECTOR PLATING
2 = 0.76 µm MIN. GOLD ON MATING AREA
0.38-2.54 µm MATTE TIN OVER 1.27µm MIN
NICKEL ON TERMINATION
3 = 0.76 µm MIN. GOLD ON MATING AREA
3.81-7.62 µm MATTE TIN ON TERMINATION
5 = 0.38 µm MIN. GOLD ON MATING AREA
0.38-2.54 µm MATTE TIN OVER 1.27µm MIN
NICKEL ON TERMINATION
6 = 0.38 µm MIN. GOLD ON MATING AREA
3.81-7.62 µm MATTE TIN ON TERMINATION

DO NOT SCALE DRAWING

THIS DOCUMENT CONTAINS PROPRIETARY INFORMATION AND SUCH INFORMATION MAY NOT BE DISCLOSED TO OTHERS FOR ANY PURPOSE OR USED FOR MANUFACTURING PURPOSES WITHOUT PERMISSION FROM AMPHENOL CANADA CORP.

MATERIAL: (RoHS COMPLIANT)

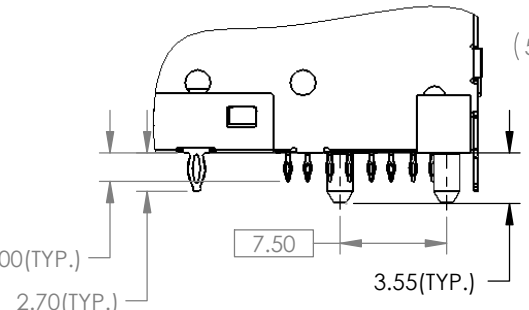
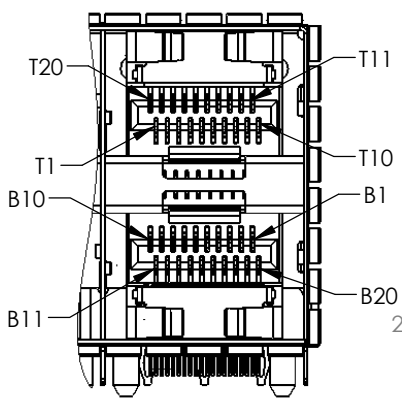
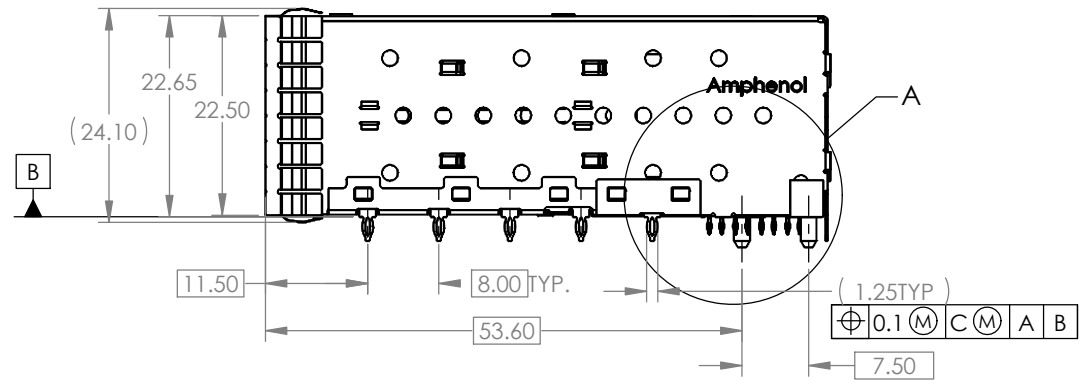
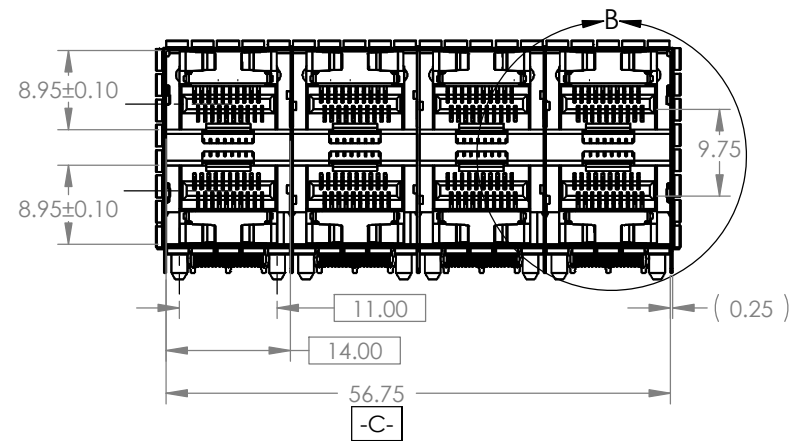
CAGE - PRESS FIT:
COPPER ALLOY
PLATING:
OPTION 2: NICKEL 2.54 µm MIN.
OPTION 3: MATTE TIN 2.54 µm MIN.
CONNECTOR - PRESS FIT:
PLASTIC HOUSING:
LCP, FLAMMABILITY RATING UL94-V0.
CONTACTS:
PHOSPHOR BRONZE
PLATING OPTION:
SEE AMPHENOL PART NUMBER
CONFIGURATION FOR OPTIONS.
PACKAGING:
TRAY PACKAGING.
TEMPERATURE RANGE:
-40°C TO +85°C

UNLESS OTHERWISE SPECIFIED DIMENSIONS ARE IN MILLIMETERS TOLERANCES ARE:		APPROVALS		DATE		Amphenol High Speed Interconnects A Division of Amphenol Corp. www.amphenol-highspeed.com	
DECIMALS	ANGLES	DRAWN	DESIGNED	May.15.11	TITLE		
X.X ± 0.25	± 1°	ChigowX			2X4 SFP+ EXPRESSPORT LOW PROFILE COMBO		
X.XX ± 0.15		CHECKED	J.SI	May.15.11			
MATERIAL AND FINISH		QA APPD					
N/A		IE APPD					
REF.	X	IE APPD			SIZE	DWG. NO.	REV.
CODE IDENT. NO.	03554	DWG APPD			A4	P-UE86-L4627-00XX1	C
					SCALE	PROJECT	SHEET
					2:3		1 OF 4

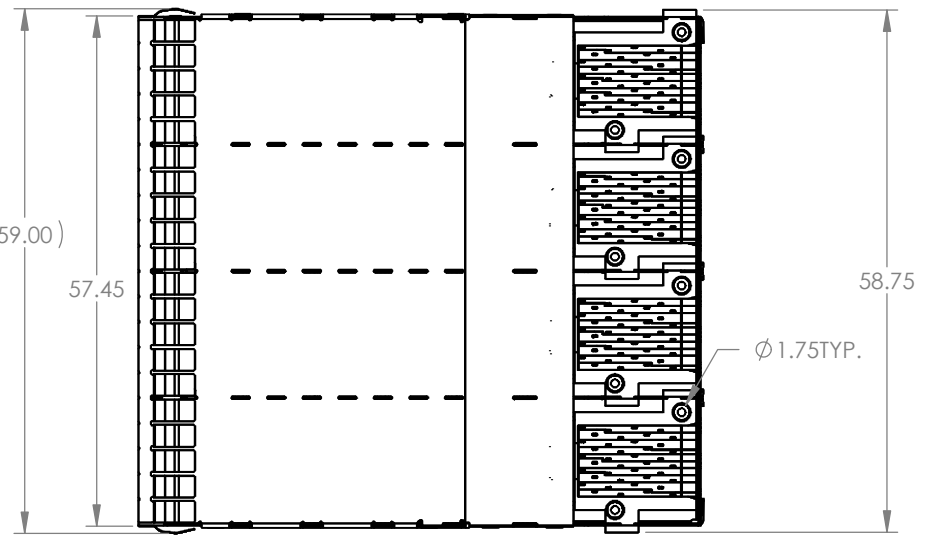
1 2 3 4 5 6

REVISIONS

REV.	ECN	DESCRIPTION	DATE	APPROVED
A		PROPOSAL	May.15.11	J.SI
B		PROPOSAL	AUG.15.12	J.SI
C		OPTION 2 AND OPTION 5 ADDED	AUG.22.13	J.SI



DETAIL A
SCALE 2 : 1



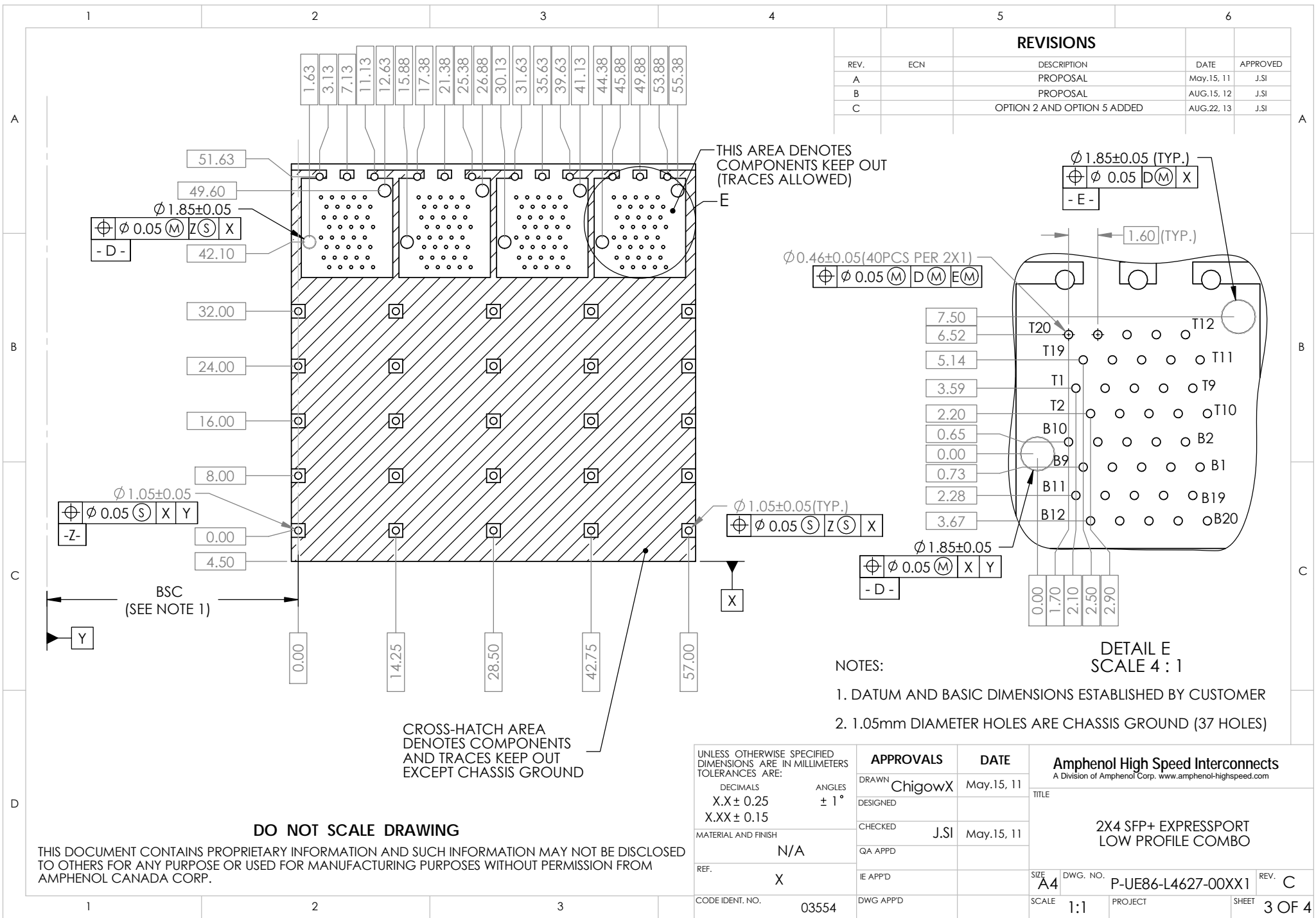
DETAIL B
SCALE 2 : 1

DO NOT SCALE DRAWING

THIS DOCUMENT CONTAINS PROPRIETARY INFORMATION AND SUCH INFORMATION MAY NOT BE DISCLOSED TO OTHERS FOR ANY PURPOSE OR USED FOR MANUFACTURING PURPOSES WITHOUT PERMISSION FROM AMPHENOL CANADA CORP.

UNLESS OTHERWISE SPECIFIED DIMENSIONS ARE IN MILLIMETERS TOLERANCES ARE:		APPROVALS		DATE		Amphenol High Speed Interconnects A Division of Amphenol Corp. www.amphenol-highspeed.com	
DECIMALS	ANGLES	DRAWN	DESIGNED	May.15.11		TITLE	
X.X ± 0.25	± 1°	ChigowX				2X4 SFP+ EXPRESSPORT LOW PROFILE COMBO	
X.XX ± 0.15		CHECKED	J.SI	May.15.11		SIZE	
MATERIAL AND FINISH		QA APPD				A4 DWG. NO.	
N/A		IE APPD				P-UE86-L4627-00XX1 REV. C	
REF.	X	DWG APPD				SCALE	
CODE IDENT. NO.	03554					1:1 PROJECT SHEET	
						2 OF 4	

1 2 3 4 5 6



REVISIONS				
REV.	ECN	DESCRIPTION	DATE	APPROVED
A		PROPOSAL	May.15.11	J.SI
B		PROPOSAL	AUG.15.12	J.SI
C		OPTION 2 AND OPTION 5 ADDED	AUG.22.13	J.SI

- NOTES:
- DATUM AND BASIC DIMENSIONS ESTABLISHED BY CUSTOMER
 - 1.05mm DIAMETER HOLES ARE CHASSIS GROUND (37 HOLES)

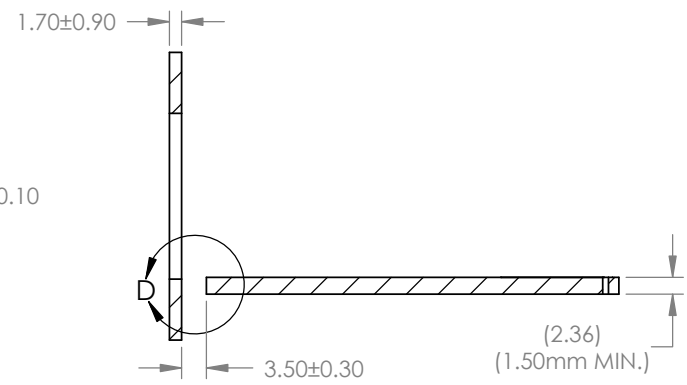
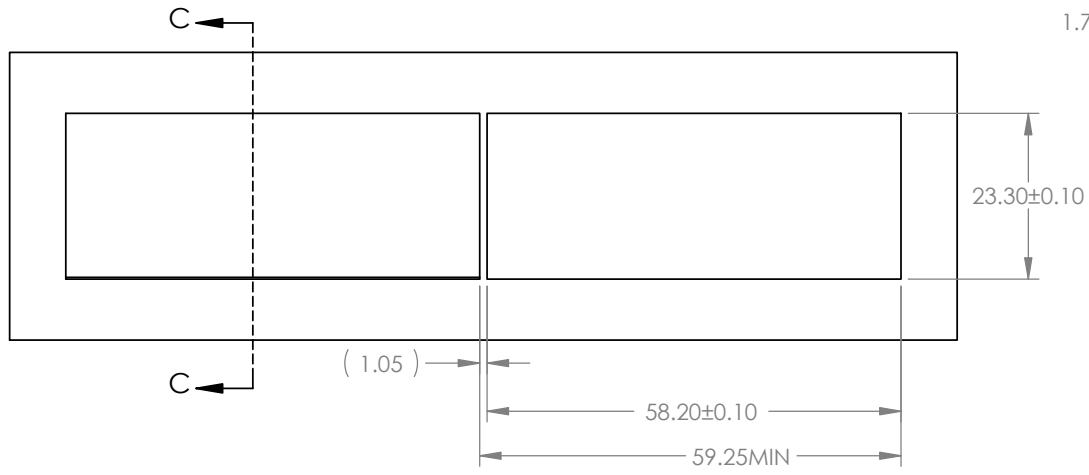
DO NOT SCALE DRAWING

THIS DOCUMENT CONTAINS PROPRIETARY INFORMATION AND SUCH INFORMATION MAY NOT BE DISCLOSED TO OTHERS FOR ANY PURPOSE OR USED FOR MANUFACTURING PURPOSES WITHOUT PERMISSION FROM AMPHENOL CANADA CORP.

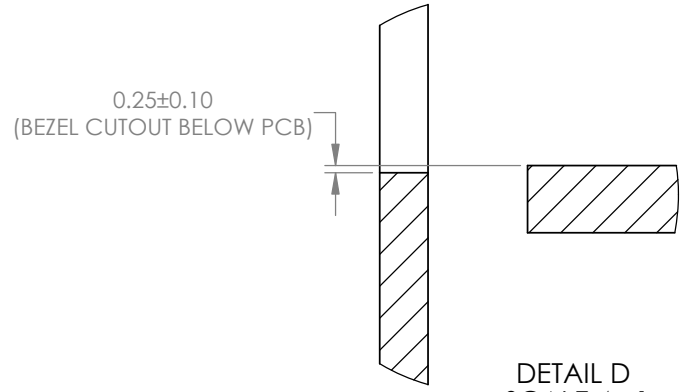
UNLESS OTHERWISE SPECIFIED DIMENSIONS ARE IN MILLIMETERS TOLERANCES ARE:		APPROVALS		DATE		Amphenol High Speed Interconnects A Division of Amphenol Corp. www.amphenol-highspeed.com	
DECIMALS	ANGLES	DRAWN	ChigowX	May.15.11	TITLE		
X.X ± 0.25	± 1°	DESIGNED			2X4 SFP+ EXPRESSPORT LOW PROFILE COMBO		
X.XX ± 0.15		CHECKED	J.SI	May.15.11			
MATERIAL AND FINISH	N/A	QA APPD			SIZE	DWG. NO.	REV.
REF.	X	IE APPD			A4	P-UE86-L4627-00XX1	C
CODE IDENT. NO.	03554	DWG APPD			SCALE	PROJECT	SHEET
					1:1		3 OF 4

1 2 3 4 5 6

REVISIONS				
REV.	ECN	DESCRIPTION	DATE	APPROVED
A		PROPOSAL	May.15. 11	J.SI
B		PROPOSAL	AUG.15. 12	J.SI
C		OPTION 2 AND OPTION 5 ADDED	AUG.22. 13	J.SI



SECTION C-C



DETAIL D
SCALE 4 : 1

DO NOT SCALE DRAWING

THIS DOCUMENT CONTAINS PROPRIETARY INFORMATION AND SUCH INFORMATION MAY NOT BE DISCLOSED TO OTHERS FOR ANY PURPOSE OR USED FOR MANUFACTURING PURPOSES WITHOUT PERMISSION FROM AMPHENOL CANADA CORP.

UNLESS OTHERWISE SPECIFIED DIMENSIONS ARE IN MILLIMETERS TOLERANCES ARE:		APPROVALS		DATE	Amphenol High Speed Interconnects A Division of Amphenol Corp. www.amphenol-highspeed.com	
DECIMALS	ANGLES	DRAWN	ChigowX	May.15. 11	TITLE 2X4 SFP+ EXPRESSPORT LOW PROFILE COMBO	
X.X ± 0.25	± 1°	DESIGNED				
X.XX ± 0.15		CHECKED	J.SI	May.15. 11		
MATERIAL AND FINISH		QA APP'D				
REF.	X	IE APP'D			SIZE A4	DWG. NO. P-UE86-L4627-00XX1
CODE IDENT. NO.	03554	DWG APP'D			SCALE 1:1	PROJECT
					SHEET	4 OF 4

1 2 3 4 5 6

A
B
C
D

A
B
C