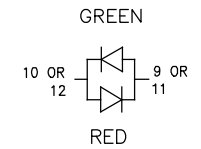
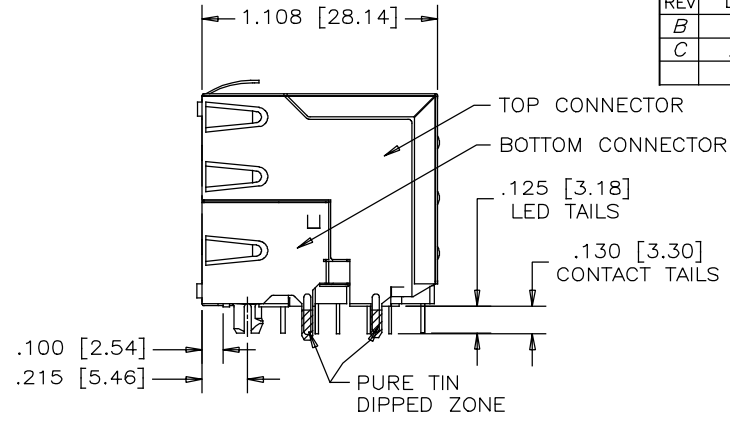
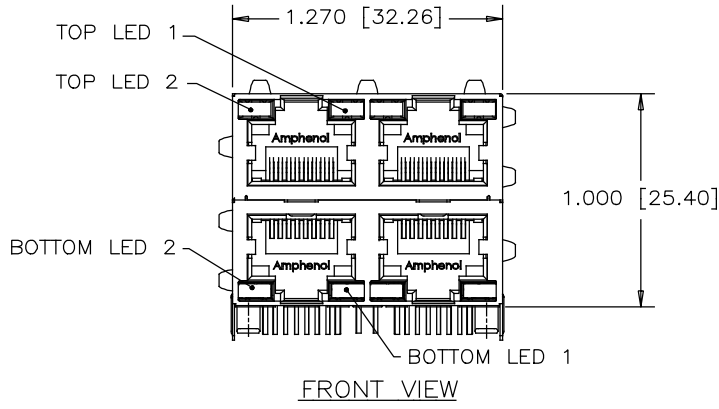
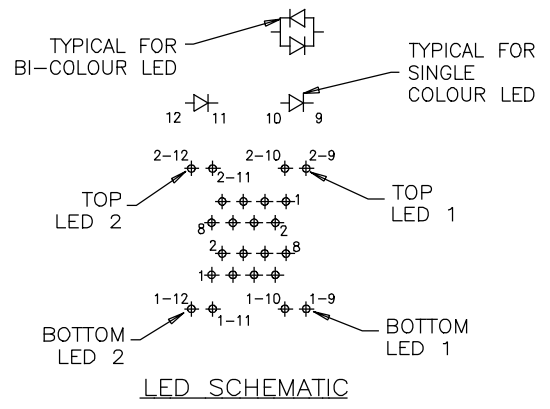
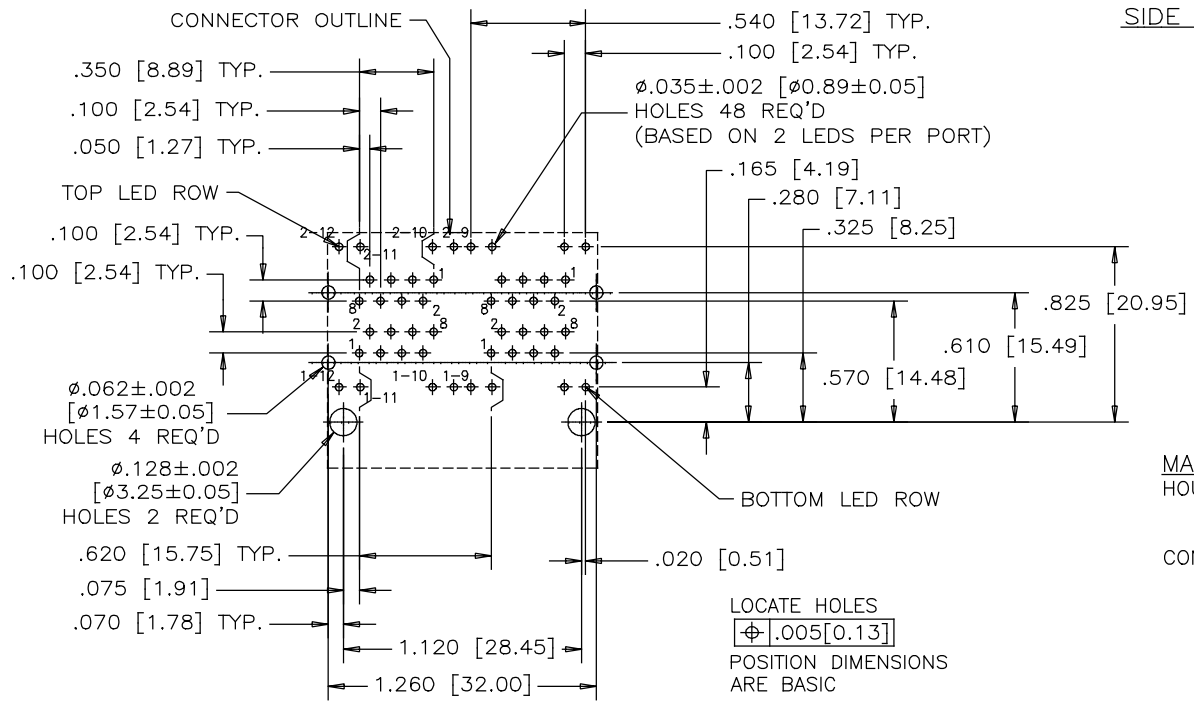


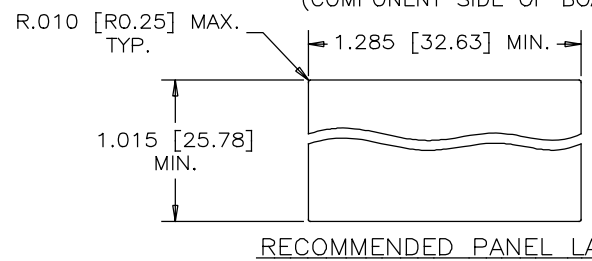
REVISIONS			
REV	DESCRIPTION, ECN, EAR NO.	DATE	APP'D
B	PROPOSAL	12/29/2005	L.CHAN
C	ADD DIMENSION TOLERANCE	MAY 03/17	L.CHAN



BI-COLOUR LED DETAIL
(GREEN/YELLOW, RED/YELLOW AND GREEN/ORANGE ARE ALSO AVAILABLE)

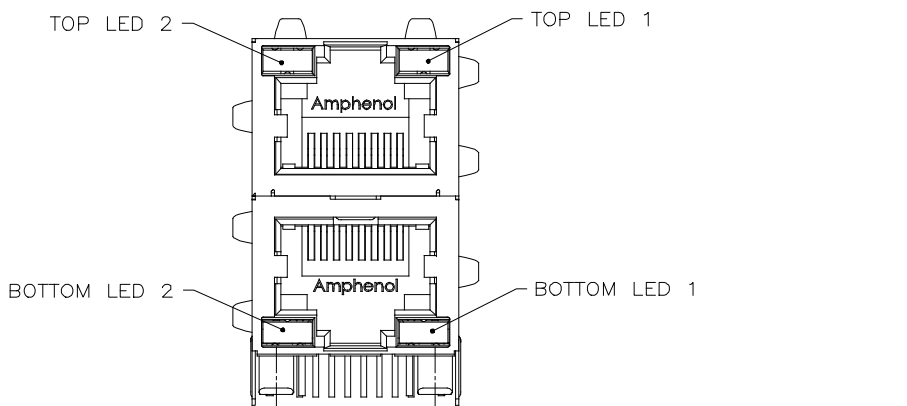


MATERIALS:
HOUSING: HIGH TEMPERATURE THERMOPLASTIC. FLAMMABILITY RATING UL 94V-0
CONTACTS: PHOSPHOR BRONZE
PLATING: 50µ" [1.27 MICRONS] MIN. GOLD OVER MATING SURFACES. 50µ" [1.27 MICRONS] MIN. NICKEL UNDERPLATE. 100µ" MIN. MATTE TIN OR GOLD FLASH ON CONTACT AILS.
SHIELD: COPPER ALLOY
PLATING: NICKEL WITH PURE-TIN DIPPED PCB TAILS.



PART NUMBER: RJSAE-538X-A4X
 REFER TO LED OPTIONS DRAWING FOR ORDERING CODES

UNLESS SPECIFIED OTHERWISE	DRAWN PWANG	DATE 05/12/29	Amphenol Canada Corp. www.amphenolcanada.com
PRIMARY UNITS INCH	CHECKED CHIGOW	DATE 05/12/29	
SECONDARY MILLIMETER	M.E. APP'D		TITLE STACKABLE MULTI-PORT MODULAR JACK SHIELDED, 4 PORT, 2 PIECE CONSTRUCTION
REFERENCE IN PARENTHESES	Q.A. APP'D		8 POSITION, 8 CONTACTS, WITH LED OPTIONS, .130 INCHES CONTACT TAIL LENGTH-RoHS COMPLIANT
GENERAL TOLERANCES	DWG APPR.		DWG. NO. P-RJSAE-538X-A4X
1 DECIMAL PLACE ±0.025	ENG. REL. NO.		REV C
2 DECIMAL PLACES ±0.020	REF.		CODE ID NO. 03554 DWG SIZE: C SCALE: N/A SHEET 1 OF 1
3 DECIMAL PLACES ±0.015	THIRD ANGLE PROJECTION	DO NOT SCALE DRAWING	
ANGULAR DEGREES ±1.0°			



EXAMPLE:1
PART NUMBER RJS AE-***X-**

SEE NOTE 2 → LED COLOR CODE

EXAMPLE:2
PART NUMBER RJS AE-***U-**-XX

SEE NOTE 2 → SPECIAL CODE FOR TOP & BOTTOM LEDS CONFIGURATION
SEE NOTE 2 → BOTTOM ASSY LED (SAME AS STD CODE)
SEE NOTE 2 → TOP ASSY LED (SAME AS STD CODE)

CODE	LED 2 (LEFT)	LED 1 (RIGHT)	CODE	LED 2 (LEFT)	LED 1 (RIGHT)	CODE	LED 2 (LEFT)	LED 1 (RIGHT)
0	BLOCKED	BLOCKED	9	GREEN	BLOCKED	J	BIC RD/GR	YELLOW
1	YELLOW	GREEN	A	BIC GR/YE	BIC GR/YE	K	YELLOW	BIC GR/OR
2	BLOCKED	GREEN	B	BIC RD/GR	BIC RD/GR	L	BIC GR/YE	RED
3	YELLOW	BLOCKED	C	BIC RD/GR	BIC GR/YE	M	RED	YELLOW
4	GREEN	YELLOW	D	GREEN	BIC GR/YE	N	BIC GR/RD	BIC GR/YE
5	GREEN	GREEN	E	YELLOW	BIC GR/YE	P	GREEN	BIC RD/GR
6	YELLOW	YELLOW	F	BIC GR/YE	YELLOW	R	BIC GR/OR	GREEN
7	RED	GREEN	G	BIC GR/OR	BIC GR/OR	T	RED	RED
8	GREEN	RED	H	BIC GR/YE	GREEN	V	BIC RD/GR	GREEN
			W	ADDITIONAL OPTIONS				
			U	SPECIAL CODE FOR TOP & BOTTOM LEDS CONFIGURATION				

EXAMPLE:3
PART NUMBER RJS AE-***W-**X

SEE NOTE 2 → ADDITIONAL LED COLOR CODE
SEE NOTE 2 → DENOTES ADDITIONAL LED OPTIONS TO BE USED

CODE	LED 2 (LEFT)	LED 1 (RIGHT)	CODE	LED 2 (LEFT)	LED 1 (RIGHT)	CODE	LED 2 (LEFT)	LED 1 (RIGHT)
0	DO NOT USE		5	BLOCKED	YELLOW	A	LOWC YE	LOWC YE
1	RED	BLOCKED	6	RED	BIC RD/GR	B	LOWC YE	LOWC GR
2	BIC GR/OR	YELLOW	7			C	LOWC GR	LOWC YE
3	YELLOW	RED	8	BIC RD/GR	BLOCKED	D	LOWC GR	LOWC GR
4	BLOCKED	RED	9	BIC GR/YE	BLOCKED	M	LOWC RD	LOWC YE
						N	GREEN	BIC GR/OR
						E	GREEN	ORANGE
						F	ORANGE	GREEN
						G	BIC YE/GR	BIC YE/GR
						P	BIC RD/YE	GREEN
						R	BIC RD/YE	BIC RD/YE
						T	BIC GR/YE	BIC RD/GR
						H	BLUE	RED

EXAMPLE:4
PART NUMBER RJS AE-***X-**XX*

SEE NOTE 2 → LED COLOR CODE THE SAME AS EXAMPLE 1, 2, 3
SEE NOTE 2 → LED COLOR CODE THE SAME AS EXAMPLE 1, 2, 3
SEE NOTE 2

REVISIONS			
REV	DESCRIPTION, ECN, EAR NO.	DATE	APP'D
H	PROPOSAL	JUL 04/12	L.CHAN
J	PROPOSAL	MAR 03/14	L.CHAN
K	ADD NEW COLOR OPTION	FEB 09/17	L.CHAN

LED SPECIFICATIONS:
FORWARD VOLTAGE: 2.1 VOLTS TYP.
REVERSE VOLTAGE: 5.0 VOLTS MIN.
LUMINOUS INTENSITY: 0.5 mCd MIN.
(AT If=2mA)
STORAGE TEMPERATURE: -20° TO 85° C
PLATING ON TAILS: TIN OR TIN/COPPER ALLOY OVER SILVER

PRIMARY COLOR FOR BI-COLOR LEDS IN STANDARD ANODE/CATHODE CONFIGURATION IS:
RED-GREEN= RED
RED-YELLOW= RED
GREEN-YELLOW= GREEN
GREEN-ORANGE= GREEN

LEGEND
BIC=BI-COLOR LED
LOWC=LOW CURRENT LED
YE=YELLOW
GR=GREEN
RD=RED
OR=ORANGE



NOTES:
1. THE TWO DIGITS PRECEDING THE ADDITIONAL LED CODE MUST BE USED IN THE PART NUMBER, WHEN ORDERING ANY OF THE ADDITIONAL LED OPTIONS.
2. '*' REPRESENT DIFFERENT OPTION OF CONNECTOR, DETAIL OPTION PLEASE SEE RELEVANT CONNECTOR DRAWING.

UNLESS SPECIFIED OTHERWISE	DRAWN PAUL WANG DATE JUL 22/05	Amphenol Canada Corp. www.amphenolcanada.com
PRIMARY UNITS	CHECKED LAWRENCE C. DATE JUL 22/05	
SECONDARY	M.E. APP'D	TITLE
REFERENCE IN PARENTHESES	Q.A. APP'D	LED OPTIONS FOR RJS AE, MULTI-PORT CONNECTORS - RoHS COMPLIANT
GENERAL TOLERANCES	DWG APPR.	DWG. NO.
1 DECIMAL PLACE	ENG. REL. NO.	P-RJS AE-LEDS
2 DECIMAL PLACES	REF.	REV K
3 DECIMAL PLACES	THIRD ANGLE PROJECTION	DO NOT SCALE DRAWING
ANGULAR DEGREES		CODE ID NO. 03554 DWG SIZE: C SCALE: N/A SHEET 1 OF 1