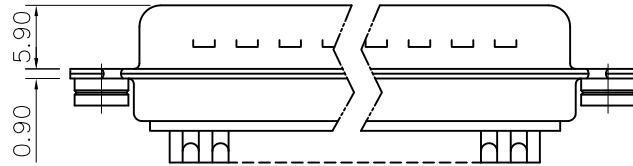
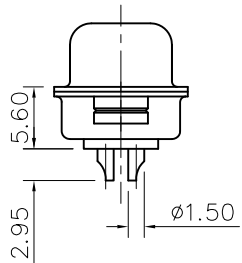
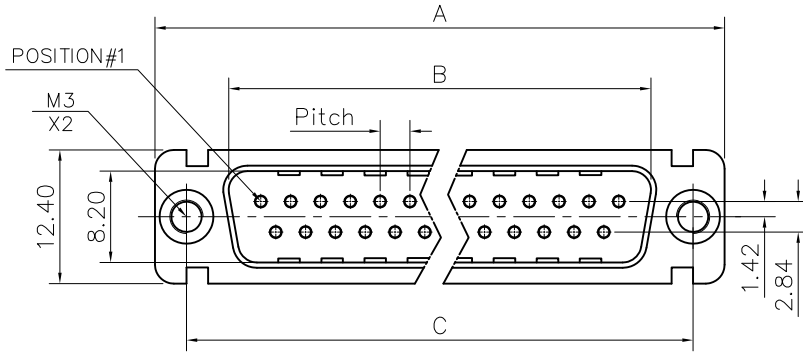


This document is the property of Amphenol Corporation and is delivered on the express condition that it is not to be disclosed, reproduced or used, in whole or in part, for manufacture or sale by anyone other than Amphenol Corporation without its prior consent, & that no right is granted to disclose or to use any information in this document.



Customer drawing

DIM.S	A	B	C	Pitch
9	30.70	16.80	25.00	2.74
15	39.00	25.10	33.30	2.74
25	52.90	38.80	47.00	2.77
37	69.20	55.30	63.50	2.77

REVISIONS				
SYM	ECN	DESCRIPTION	DATE	APPROVED
1	HK--	First Release Drawing	Apr/02/12	IP

D-SUB TECHNICAL DATA

SHELL : Steel, 2.5um(100u") min tin over 1.25um(50u") min nickel
 BODY : Glass filled thermoplastic.
 CONTACTS : Brass.
 REAR NUT : Brass, 100u" min tin over 50u" min nickel
 ELECTRICAL : Voltage rating : 300 V RMS at 50 Hz
 Current rating : 7.5A
 Insulation resistance >5000 M Ohms
 Contact resistance 20 mOhms max
 CLIMATIC : Temperature range -55 °C up to 125°C
 Damp heat 21 days(40 °C-95% HR)
 MARKING : Amphenol...(Series No.)
 Commercial reference
 Manufacturing date

PRODUCT CODE

L 717D X G XX P

L: RoHS Compliance

Contact type:
P: Male

717D: tinned shell +
dimples for plug

Configuration: 09,15,25,37

Shell Size: E,A,B,C

G=rear insert M3

UNLESS OTHERWISE SPECIFIED TOLERANCES	APPROVAL		DATE
	U.S.	METRIC	
.X +/-	0.50	DRAWN	Mary.ma Apr/02/12
.XX +/-	0.30	CHECKED	Tony-tang Apr/02/12
.XXX +/-	0.20	CHECKED	
FRACTIONS +/-	5'	DRAWING FILE :	
ANGLES +/-		ANGLE OF PROJECTION	
FOR MATERIALS AND FINISHES SEE NOTES		REMOVE SHARP EDGES	
DIMENSIONS		U.S. INCHES	
METRIC MM			

Amphenol
Amphenol East Asia Limited

TITLE
Machined contacts connector, D series

SIZE	DRAWING NO.	REV.
A4	C L717DXGXXP	1
SCALE	NONE	SHEET 1 OF 1