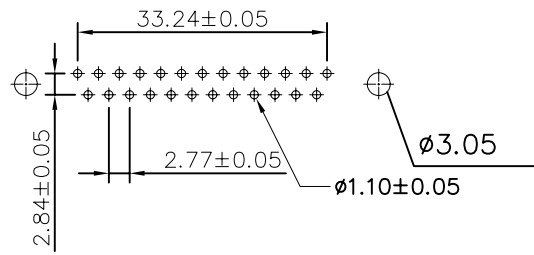
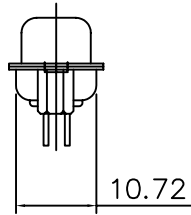
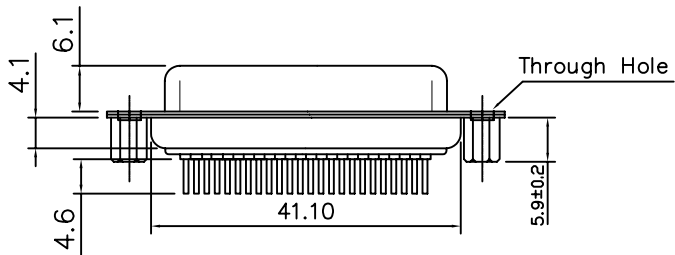
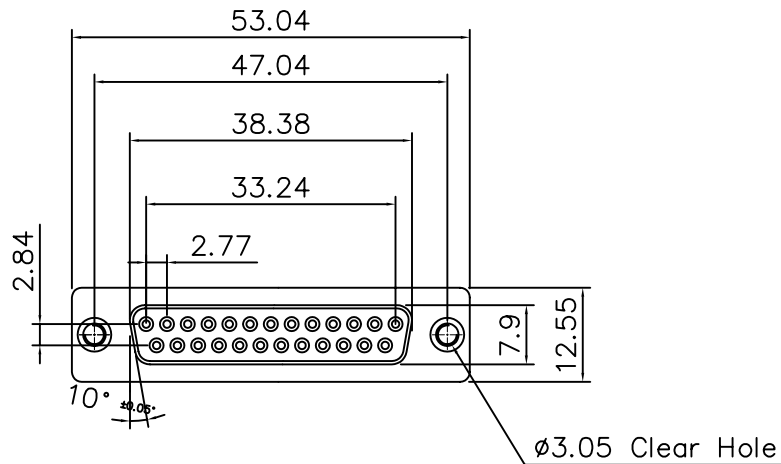
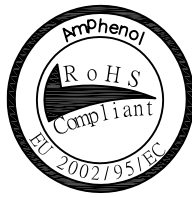


A
B
C
D
E



RECOMMENDED PCB LAYOUT



TECHNICAL DATA

D-SUBMINIATURE CONNECTORS

SHELL : Steel
 Finish : Tinned
BODY : Glass filled thermoplastic.
 Flame retardant to UL94 V-0
 Color : Black

CONTACTS : Stamped Phosphor Bronze
 Finish of contact mating area:gold over nickel

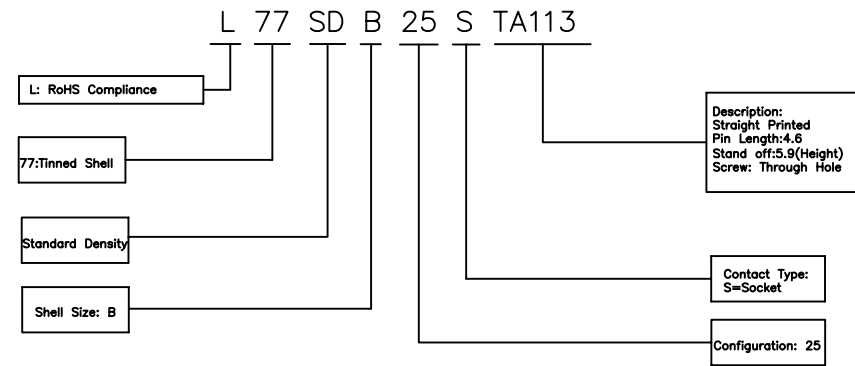
SCREWLOCKS: Brass with tin plating on nickel

ELECTRICAL: Contact Resistance : 20 milliohms
 Max at 1 AMP DC.
 Insulation Resistance : 1000
 megohms at 500 VDC
 Dielectric Withstanding Voltage :
 1000 VAC/rms 60Hz for 1 minute
 Current Rating : 1 AMP
 Volatge Rating : 250 VAC/rms 60Hz

CLIMATIC : Temperature range -55 degree up to 105 degree

MARKING : Amphenol-...(Series No.)
 Commercial reference
 Manufacturing date

PRODUCT CODE



Amphenol Socapex		TOL. GEN.: +/-0.30							
		VOLUME:							
		AREA:							
		PLATING:							
SERIES		TREATMENT:							
NUMBER SERIES		MATERIAL:							
Dip Straight Type		FILE:		CUSTOMER	MODIFICATIONS	DRAW	DATE	APPROVE	IND.
DATE	2006.06.30	DESIGNATION	Dip Straight Type 25 Pos Socket D-SUB Connector	INTERNAL PART NUMBER					
				L77SDB25STA113					