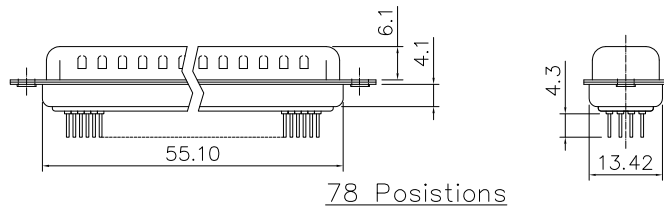
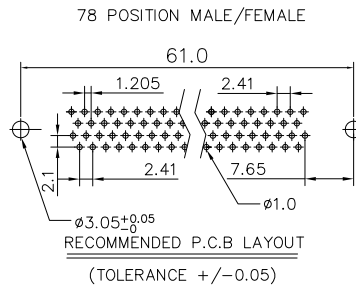
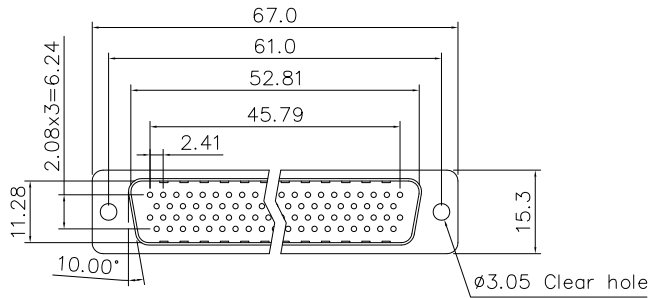
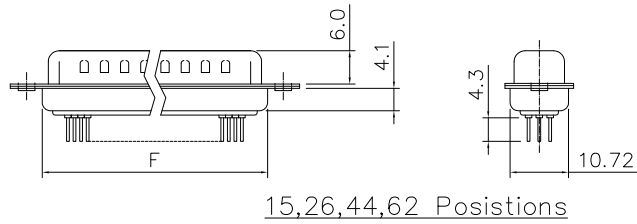
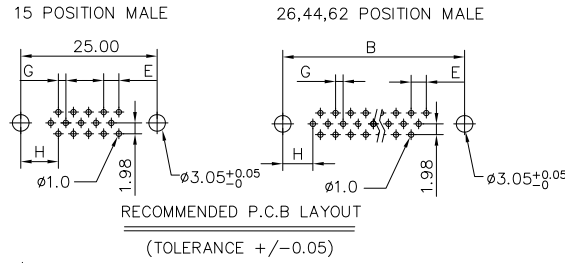
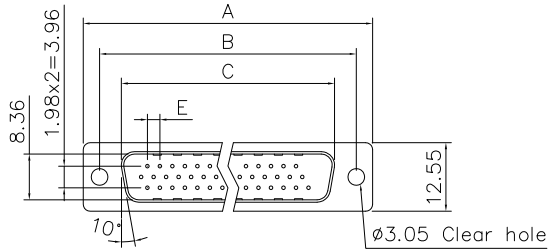


This document is the property of Amphenol Corporation and is delivered on the express condition that it is not to be disclosed, reproduced or used, in whole or in part, for manufacture or sale by anyone other than Amphenol Corporation without its prior consent, & that no right is granted to disclose or to use any information in this document.

Customer drawing



Dimensions

Positions	A	B	C	E	F	G	H
15	30.81	24.99	16.92	2.29	19.20	1.145	7.04
26	39.20	33.30	25.25	2.29	27.70	1.145	6.88
44	53.05	47.04	38.96	2.29	41.10	1.145	6.88
62	69.40	63.50	55.42	2.41	57.30	1.205	7.00

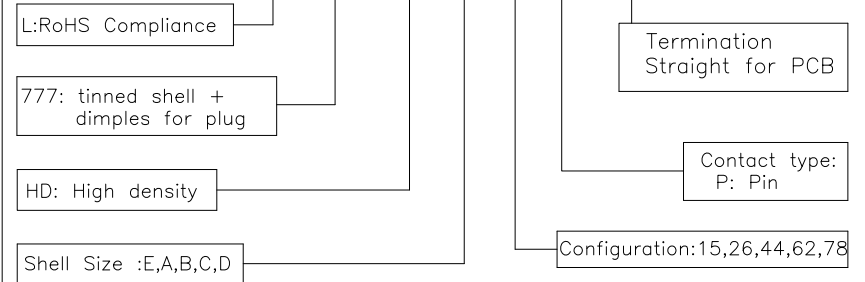
REVISIONS				
SYM	ECN	DESCRIPTION	DATE	APPROVED
1	HK--	First Release Drawing	01/16/09	IP
2	HK--	Change dim. 30.84 to 30.81mm	08/27/13	IP

D-SUB TECHNICAL DATA

SHELL : Steel, 100u" Tin Over 50u" min nickel over 50u" min Copper
 BODY : Glass-Filled Thermoplastic PBT,UL94V-0
 CONTACTS : Copper alloy
 15u"gold over 50u" nickel on mating area
 100u" tin over 50u" nickel on solder area
 ELECTRICAL : Voltage rating 250 VAC/RMS
 Current Rating :3 AMP
 Withstanding Voltage >500 VAC/RMS
 Insulation resistance >1000 M Ohms
 Contact resistance 20 mOhms max
 MARKING : Amphenol...(Series No.)
 Commercial reference
 Manufacturing date

PRODUCT CODE

L 777 HD X XX P OL2



UNLESS OTHERWISE SPECIFIED TOLERANCES	APPROVAL		DATE
	U.S.	METRIC	
.X +/-	0.50		DRAWN Felice Liu 8/27/13
.XX +/-	0.30		CHECKED Tony Tang 8/27/13
.XXX +/-	0.20		CHECKED
FRACTIONS +/-		5'	
ANGLES +/-			
FOR MATERIALS AND FINISHES SEE NOTES	DRAWING FILE :		
REMOVE SHARP EDGES	ANGLE OF PROJECTION		
DIMENSIONS	U.S. INCHES		
METRIC	MM		

Amphenol		
Amphenol East Asia Limited		
TITLE Stamped and formed contacts,HD Series		
SIZE	DRAWING NO.	REV.
A4	C L777HDXXXPOL2	2
SCALE	NONE	SHEET 1 OF 1