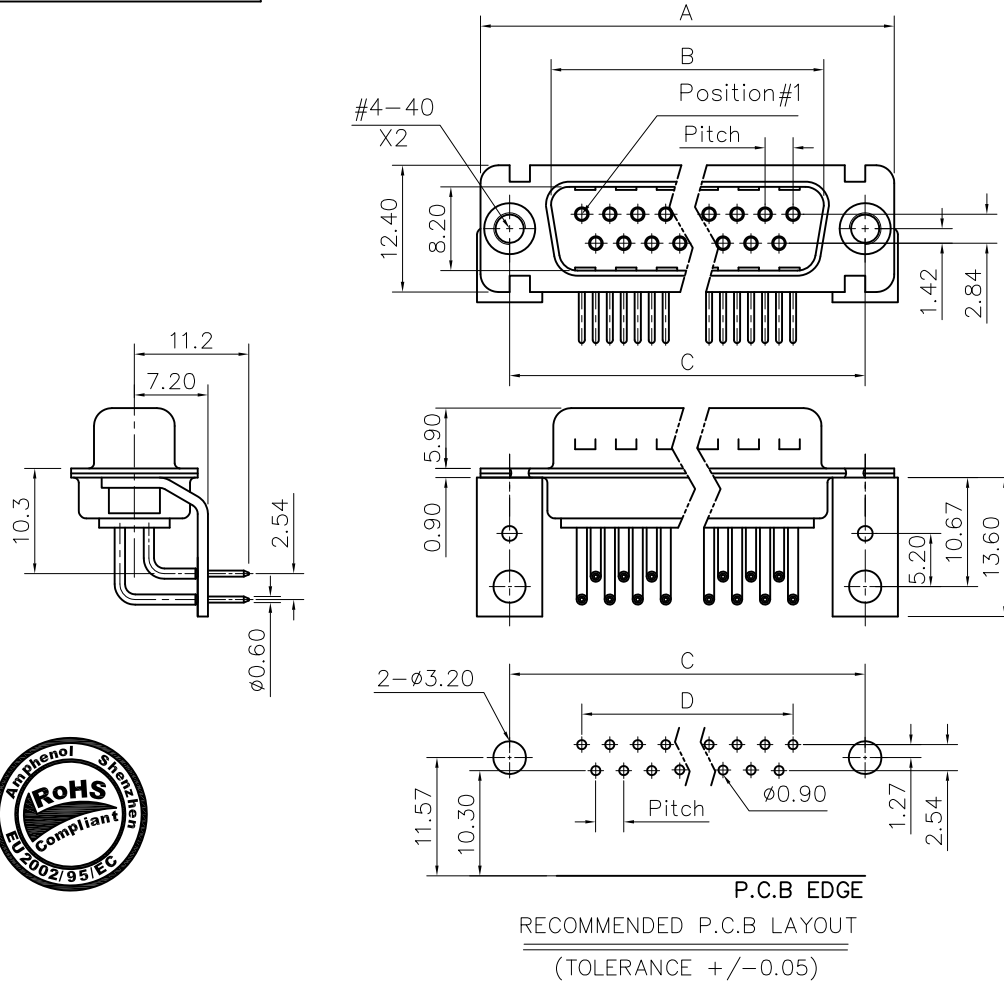


This document is the property of Amphenol Corporation and is delivered on the express condition that it is not to be disclosed, reproduced or used, in whole or in part, for manufacture or sale by anyone other than Amphenol Corporation without its prior consent, & that no right is granted to disclose or to use any information in this document.



# Customer Drawing

DIM.S SHELL	A	B	C	D	Pitch
09	30.70	16.80	25.00	10.96	2.74
15	39.00	25.10	33.30	19.18	2.74
25	52.90	38.80	47.00	33.12	2.76
37	69.20	55.30	63.50	49.68	2.76

REVISIONS				
SYM	ECN	DESCRIPTION	DATE	APPROVED
1	HK--	First Release Drawing	09/22/08	IP

## D-SUB TECHNICAL DATA

SHELL : Steel, 2.5um(100u") min tin over 1.25um(50u") min nickel  
 BODY : Glass filled thermoplastic.  
 Flame retardant to UL94 V-0, Color Black

CONTACTS : Brass  
 0.1um(4u") min gold over 1.25um(50u") min nickel

REAR INSERT : Brass, 100u" min tin over 50u" min nickel

BRACKET : Steel, 100u" min tin over 50u" min nickel

ELECTRICAL : Voltage rating : 300 V RMS at 50 Hz  
 Current rating : 7.5A  
 Insulation resistance >5000 M Ohms  
 Withstanding voltage 1000V AC for one minute  
 Contact resistance 20 mOhms max.

MARKING : Amphenol-...(Series No.)  
 Commercial reference  
 Manufacturing date

## PRODUCT CODE

**L 717D X H XX P 1AMN**

- L: RoHS Compliance
- 717D: tinned shell + dimples for plug
- Shell Size : E,A,B,C
- Mounting option:  
H=Rear insert 4-40
- Right angle connector:  
European footprint  
metal bracket  
1AMN=X=2.54
- Contact type:  
P: Male
- Configuration: 09,15,25,37

UNLESS OTHERWISE SPECIFIED TOLERANCES	APPROVAL		DATE
	U.S.	METRIC	
.X +/-	0.50	DRAWN	09/22/08
.XX +/-	0.30	CHECKED	09/22/08
.XXX +/-	0.20	CHECKED	
FRACTIONS +/-	5'	DRAWING FILE :	
ANGLES +/-		ANGLE OF PROJECTION	
FOR MATERIALS AND FINISHES SEE NOTES			
REMOVE SHARP EDGES			
DIMENSIONS		SCALE	
U.S.	INCHES	NONE	
METRIC	MM	SHEET 1 OF 1	

<b>Amphenol</b> Amphenol East Asia Limited		TITLE	
		Machined contacts connector, D series	
SIZE	DRAWING NO.	REV.	
A4	C L717DXHXXP1AMN	1	