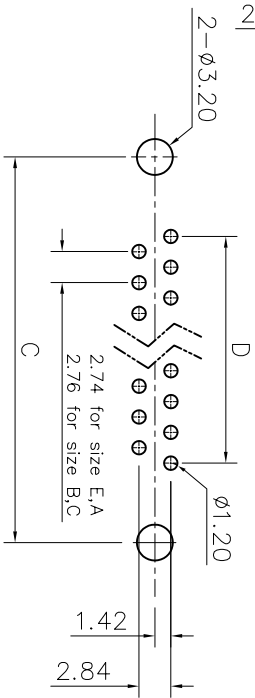
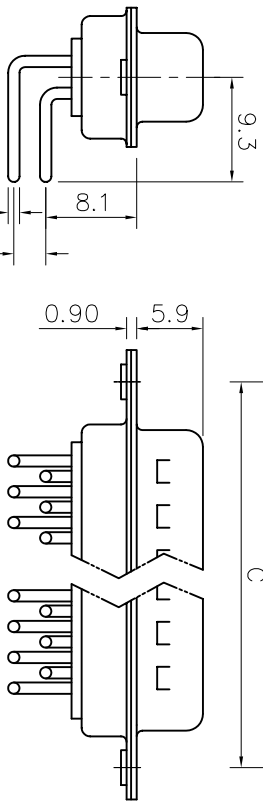
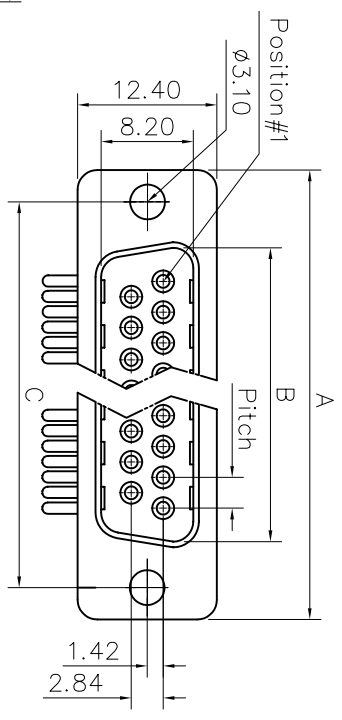


This document is the property of Amphenol Communications and is intended for the express condition that it is not to be disclosed, reproduced or used in whole or in part, for manufacture or sale by anyone other than Amphenol without the express written consent of Amphenol. Any reproduction, in whole or in part, or to use any information in this document, is strictly prohibited.



RECOMMENDED P.C.B LAYOUT  
(TOLERANCE +/-0.03)

# Customer drawing

DIM.S	A	B	C	D	Pitch
9 SHELL	30.70	16.80	25.00	10.96	2.74
15	39.00	25.10	33.30	19.18	2.74
25	52.90	38.80	47.00	33.12	2.77
37	69.20	55.30	63.50	49.68	2.77

REVISIONS		DATE	APPROVED
1	SWM EGN	12/11/07	

## D-SUB TECHNICAL DATA

**SHELL :** Steel 2.5um(100u") min tin over 1.25um(50u") min nickel  
**BODY :** Glass filled thermoplastic.  
 Flame retardant to UL94 V-0 Color Black

**CONTACTS :** Brass  
 0.1um(4u") min gold over 1.25um(50u") min nickel

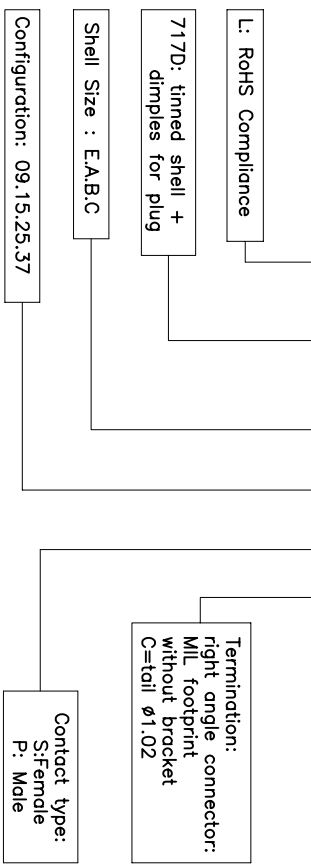
**ELECTRICAL :** Voltage rating : 300 V RMS at 50 Hz  
 Current rating 7.5A.  
 Insulation resistance >5000 M Ohms  
 Contact resistance 20 mOhms max.

**CLIMATIC :** Temperature range -55 °C up to 85°C  
 Damp heat 21 days(40 °C-95% HR)

**MARKING :** Commercial reference  
 Commercial reference  
 Manufacturing date

### PRODUCT CODE

**L 717D XXX P C**



**UNLESS OTHERWISE SPECIFIED**

TOLERANCES	U.S.	METRIC	APPROVAL	DATE
-X +/-	0.50	0.20	DRWN	09/15/07
-XX +/-	0.30	0.10	CHECKED	12/11/07
-XXX +/-	0.20	0.08	CHECKED	12/11/07

**FOR MATERIALS AND FINISHES SEE NOTES REMOVE SHARP EDGES**

**DIMENSIONS** DIM TOLERANCES

**ANGLE OF PROJECTION**

**TITLE** machined contacts connector, D series

**Amphenol®**

**SIZE DRAWING NO.** A4 C L717DXXXPC

**SCALE** NONE

**SHEET** 1 OF 1

**REV.** 1