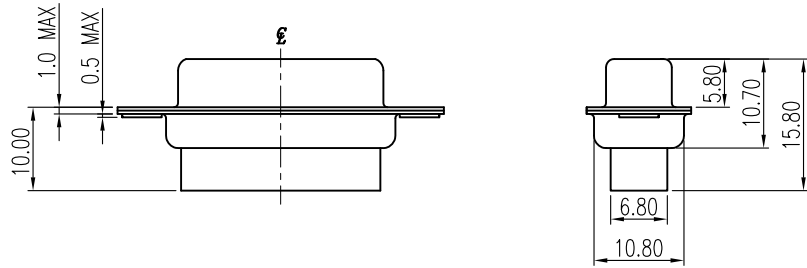
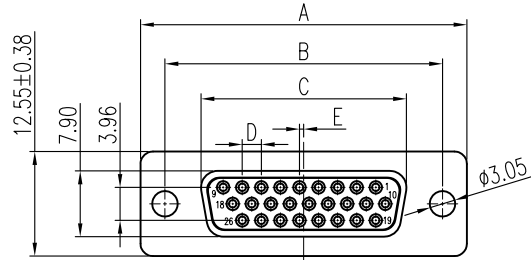
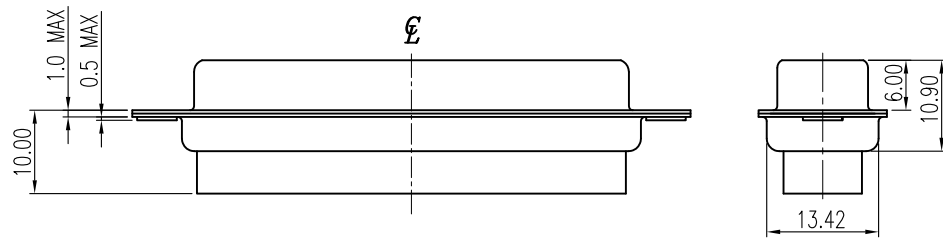
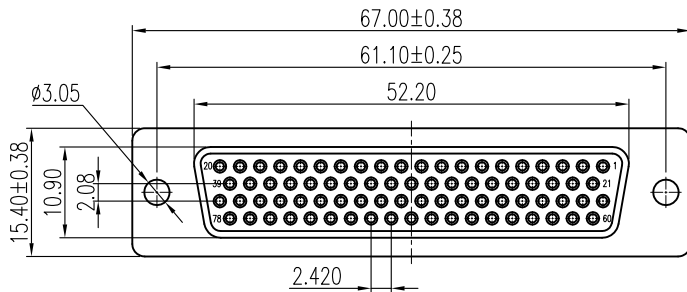


This document is the property of Amphenol Corporation and is delivered on the express condition that it is not to be disclosed, reproduced or used, in whole or in part, for manufacture or sale by anyone other than Amphenol Corporation without its prior consent, & that no right is granted to disclose or to use any information in this document.

Customer drawing



Shell Size	NO.	A±0.38	B±0.25	C±0.13	D±0.13	E±0.25
E	15S	30.81	24.99	16.33	2.29	0.25
A	26S	39.19	33.32	24.66	2.29	0.51
B	44S	53.04	47.04	38.38	2.29	0.51
C	62S	69.32	63.50	54.84	2.41	0.58

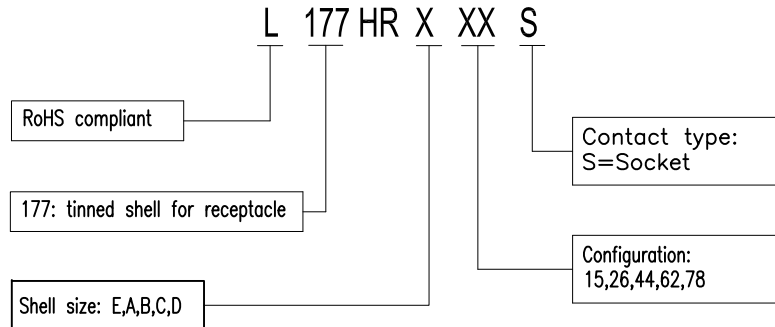


REVISIONS				
SYM	ECN	DESCRIPTION	DATE	APPROVED
1	HK--	First Release Drawing	03/03/09	IP
2	HK--	Update the Drawing	01/02/14	IP
3	HK--	Update the Drawing	10/31/14	IP
4	HK--	Updated withstanding voltage	08/09'22	Tony.Tang

D-SUB TECHNICAL DATA

SHELL : SPCC, 100u" min tin over 50u" min nickel over 50u" copper.
 BODY : PBT, UL 94V-0, Color:Black.
 SPRING WASHER: Stainless Steel
 ELECTRICAL : Withstanding Voltage >500 V RMS
 Insulation resistance >1000 M Ohms
 MARKING : Amphenol---(Series No.)
 Commercial reference
 Manufacturing date

PRODUCT CODE



UNLESS OTHERWISE SPECIFIED TOLERANCES		APPROVAL		DATE
U.S.	METRIC	DRAWN	Felts Liu	08/09'22
.X +/-	0.50	CHECKED	Tony.Tang	08/09'22
.XX +/-	0.30	CHECKED		
.XXX +/-	0.20			
FRACTIONS +/-	5'			
ANGLES +/-				
FOR MATERIALS AND FINISHES SEE NOTES		DRAWING FILE :		
REMOVE SHARP EDGES		ANGLE OF PROJECTION		
DIMENSIONS		TITLE		
U.S.	INCHES	D-sub, crimping type, HR series		
METRIC	MM	SIZE	DRAWING NO.	REV.
		A4	L177HRXXXS	4
		SCALE	NONE	SHEET 1 OF 1