

This document is the property of Amphenol Corporation and is delivered on the express condition that is not to be disclosed, reproduced or used, in whole or in part, for manufacture or sale by anyone other than Amphenol Corporation without its prior consent, and that no right is granted to disclose or to use any information in this document.

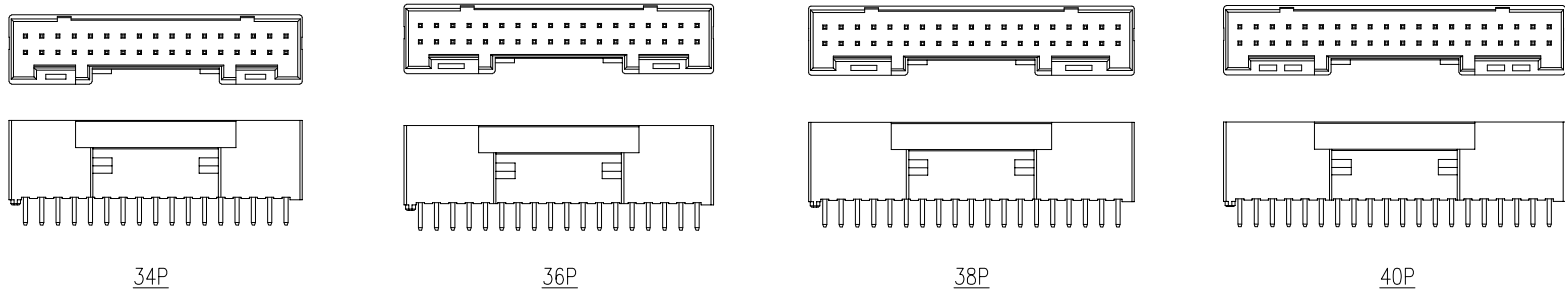
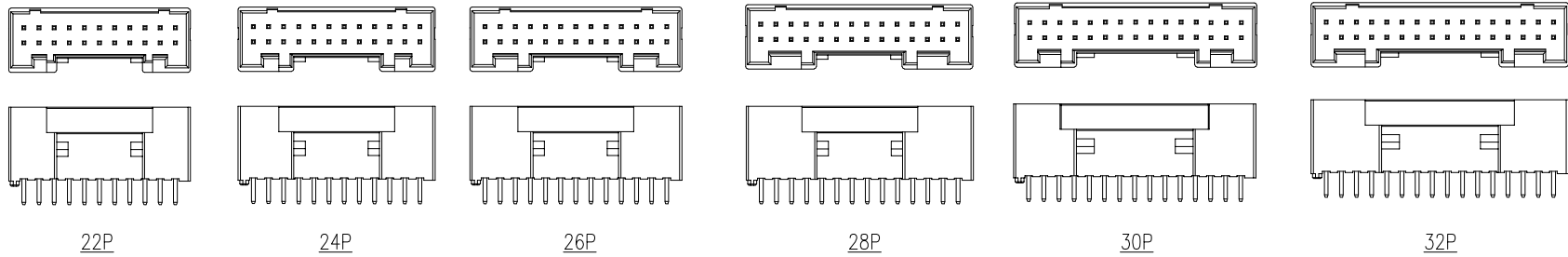
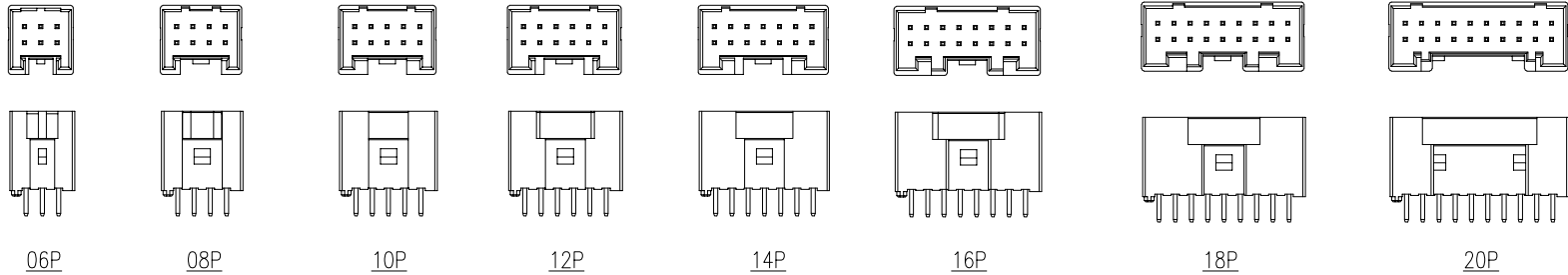
The marking on this product doesn't contain environmental hazardous materials per directive 2011/65/EU & 2015/863/EU for RoHS compliant and per IEC 61249-2-21 for Halogen-Free compliant.



ORIGINAL



| REVISIONS | | | | |
|-----------|----------|---|------------|----------|
| SYM | ECN No. | DESCRIPTION | DATE | BY |
| B | NE-20048 | ADD STAND OFF TO 0.3mm | 2020-03-31 | Sandy Wu |
| C | NE-21099 | MISTAKE CAP DIM, ADD D/C, PIN WIDTH, ADD SOLDER AREA PLATING INFORMATION, UPDATED THE TUBE VIEWER AND THE HOLE FOR RECOMMENDED PCB LAYOUT | 2021-10-15 | Sandy Wu |
| D | NE-23054 | ADD 2X03 PIN | 2023-03-06 | Roy Lin |
| E | NE-23157 | UPDATE D/C POSITION AND APPEARANCE OF EACH PIN | 2023-06-09 | Roy Lin |



| | | | | | | |
|--|---|--|--|---------------------|--|---|
| TOLERANCE X. ±0.30 X.X ±0.20 X.XX ±0.10 X.XXX ±0.10 ANGULAR ±1° UNLESS OTHERWISE SPECIFIED | APPROVALS DRAWN Roy Lin CHECKED Joseph Jiang APPROVED Roger Tsai | DATE 2023-06-09 2023-06-09 2023-06-09 | TITLE G861 SERIES, PROTECTED HEADER, 2.00 PITCH STRAIGHT, PCB MOUNT | | Amphenol ® Amphenol Corporation Amphenol Taiwan Corporation | |
| | | | | UNIT mm SCALE NA | SIZE A3 SHEET 2 OF 4 | PART No. G861XXX1XS1HR DWG No. G861XXX1XS1HR |
| | | | | | | REV. E |
| | | | | PROJECT CODE PHD | | |

This document is the property of Amphenol Corporation and is delivered on the express condition that it is not to be disclosed, reproduced or used, in whole or in part, for manufacture or sale by anyone other than Amphenol Corporation without its prior consent, and that no right is granted to disclose or to use any information in this document.

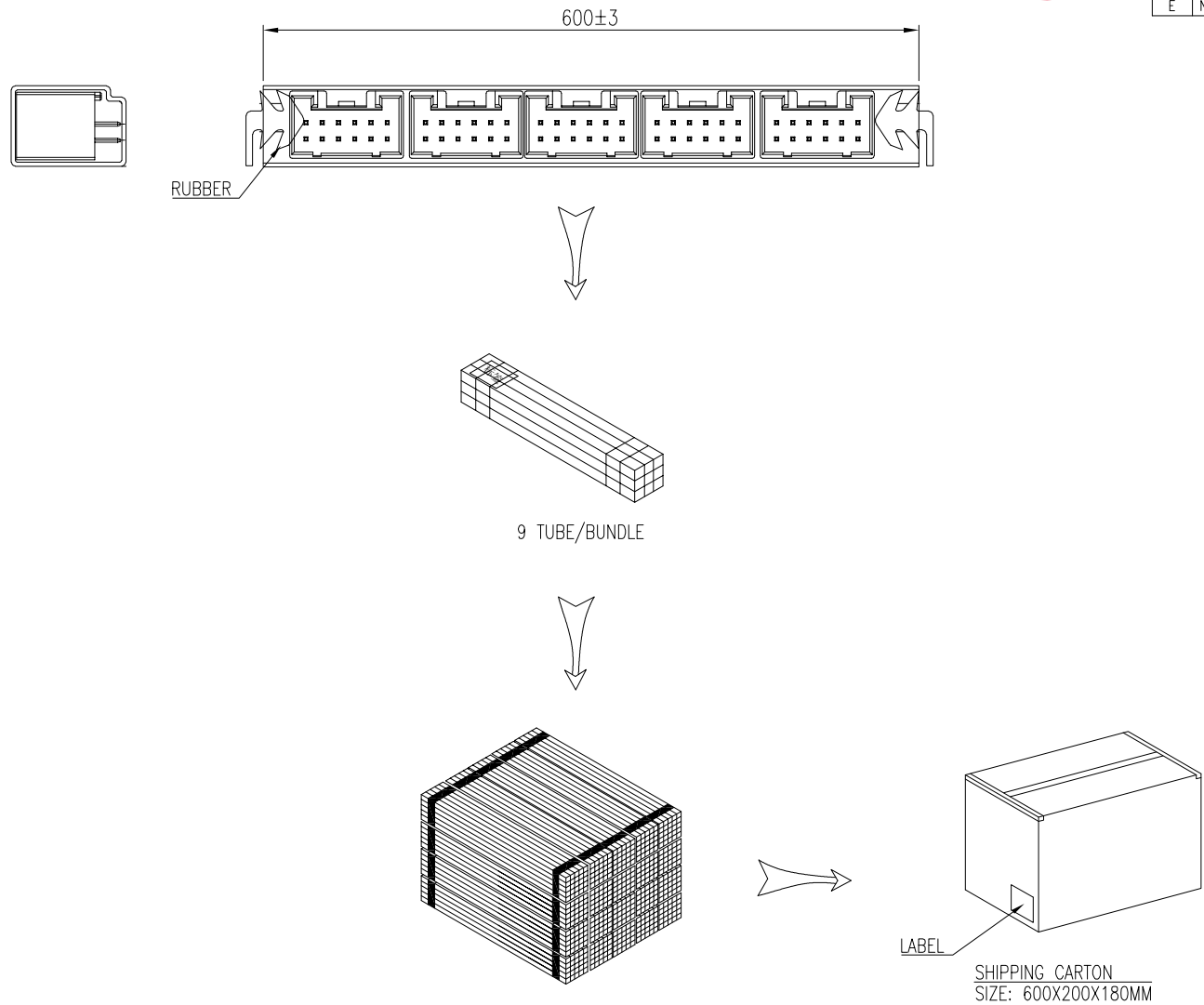
The marking on this product doesn't contain environmental hazardous materials per directive 2011/65/EU & 2015/863/EU for RoHS compliant and per IEC 61249-2-21 for Halogen-Free compliant.



ORIGINAL



| REVISIONS | | | | |
|-----------|----------|---|------------|----------|
| SYM | ECN No. | DESCRIPTION | DATE | BY |
| B | NE-20048 | ADD STAND OFF TO 0.3mm | 2020-03-31 | Sandy Wu |
| C | NE-21099 | MISTAKE CAP DIM, ADD D/C, PIN WIDTH, ADD SOLDER AREA PLATING INFORMATION, UPDATED THE TUBE VIEWER AND THE HOLE FOR RECOMMENDED PCB LAYOUT | 2021-10-15 | Sandy Wu |
| D | NE-23054 | ADD 2X03 PIN | 2023-03-06 | Roy Lin |
| E | NE-23157 | UPDATE D/C POSITION AND APPEARANCE OF EACH PIN | 2023-06-09 | Roy Lin |



| POS. | PCS/TUBE | TUBE/CARTON | PCS/CARTON |
|------|----------|-------------|------------|
| 2x03 | 72 | 9X14=126 | 9072 |
| 2x04 | 58 | 9X14=126 | 7308 |
| 2x05 | 48 | 9X14=126 | 6048 |
| 2x06 | 41 | 9X14=126 | 5166 |
| 2x07 | 36 | 9X14=126 | 4536 |
| 2x08 | 32 | 9X14=126 | 4032 |
| 2x09 | 29 | 9X14=126 | 3654 |
| 2x10 | 26 | 9X14=126 | 3276 |
| 2x11 | 24 | 9X14=126 | 3024 |
| 2x12 | 22 | 9X14=126 | 2772 |
| 2x13 | 20 | 9X14=126 | 2520 |
| 2x14 | 19 | 9X14=126 | 2394 |
| 2x15 | 18 | 9X14=126 | 2268 |
| 2x16 | 17 | 9X14=126 | 2142 |
| 2x17 | 16 | 9X14=126 | 2016 |
| 2x18 | 15 | 9X14=126 | 1890 |
| 2x19 | 14 | 9X14=126 | 1764 |
| 2x20 | 13 | 9X14=126 | 1638 |

| TOLERANCE | APPROVALS | DATE | TITLE | | Amphenol® | | | |
|----------------------------|----------------------|------------------|---|--|---|------------------------|--|--------|
| X. ±0.30 | DRAWN Roy Lin | 2023-06-09 | G861 SERIES, PROTECTED HEADER, 2.00 PITCH STRAIGHT, PCB MOUNT | | Amphenol Corporation Amphenol Taiwan Corporation | | | |
| X.X ±0.20 | CHECKED Joseph Jiang | 2023-06-09 | | | | | | |
| X.XXX ±0.10 | APPROVED Roger Tsai | 2023-06-09 | UNIT mm | | SIZE A3 | PART No. G861XXX1XS1HR | | |
| ANGULAR ±1° | DWG TYPE CUST DWG | PROJECT CODE PHD | SCALE NA | | SHEET 3 OF 4 | DWG No. G861XXX1XS1HR | | REV. E |
| UNLESS OTHERWISE SPECIFIED | | | | | | | | |

This document is the property of Amphenol Corporation and is delivered on the express condition that it is not to be disclosed, reproduced or used, in whole or in part, for manufacture or sale by anyone other than Amphenol Corporation without its prior consent, and that no right is granted to disclose or to use any information in this document.

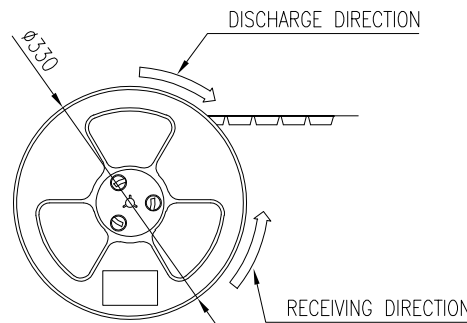
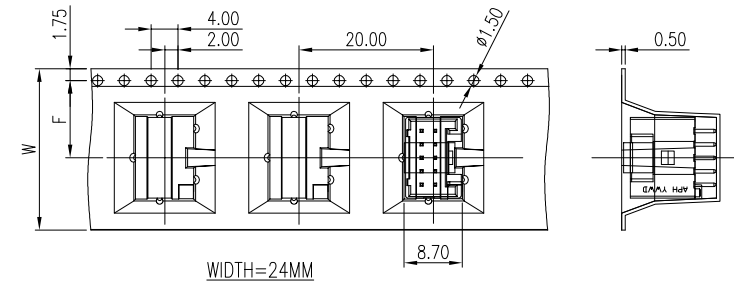
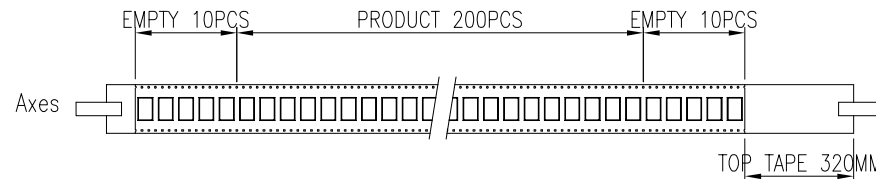
The marking on this product doesn't contain environmental hazardous materials per directive 2011/65/EU & 2015/863/EU for RoHS compliant and per IEC 61249-2-21 for Halogen-Free compliant.



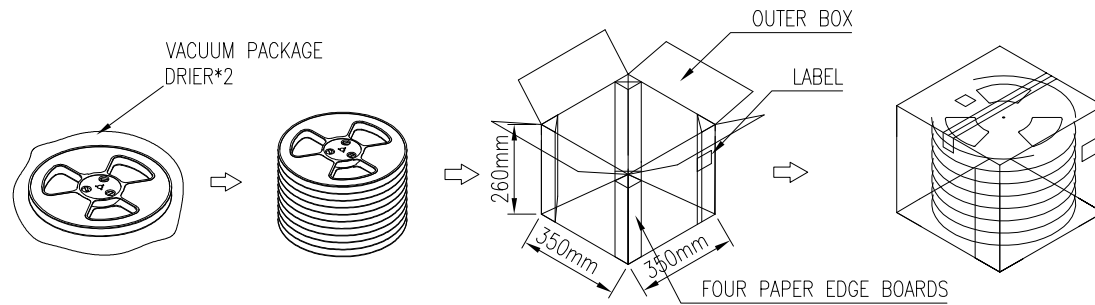
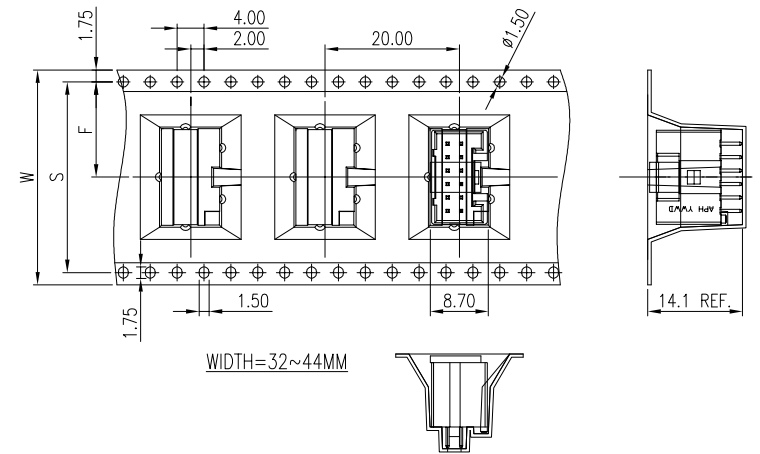
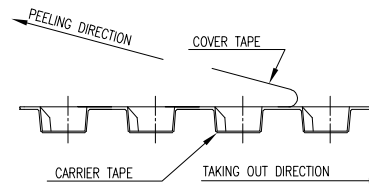
ORIGINAL



| REVISIONS | | | | | |
|-----------|----------|---|------------|----------|--|
| SYM | ECN No. | DESCRIPTION | DATE | BY | |
| B | NE-20048 | ADD STAND OFF TO 0.3mm | 2020-03-31 | Sandy Wu | |
| C | NE-21099 | MISTAKE CAP DIM, ADD D/C, PIN WIDTH, ADD SOLDER AREA PLATING INFORMATION, UPDATED THE TUBE VIEWER AND THE HOLE FOR RECOMMENDED PCB LAYOUT | 2021-10-15 | Sandy Wu | |
| D | NE-23054 | ADD 2X03 PIN | 2023-03-06 | Roy Lin | |
| E | NE-23157 | UPDATE D/C POSITION AND APPEARANCE OF EACH PIN | 2023-06-09 | Roy Lin | |



COVER TAPE PEEL STRENGTH:20~120g
PEEL SPEED:300mm/minute



| | | | | | |
|-----------------|----|------|-----------|-----------|-------------|
| 2X16=32~2X20=40 | 56 | 26.2 | 200 | 4R | 800 |
| 2X10=20~2X15=30 | 44 | 20.2 | 200 | 4R | 800 |
| 2X06=12~2X09=18 | 32 | 14.2 | 200 | 6R | 1200 |
| 2X03=06~2X05=10 | 24 | 11.5 | 200 | 8R | 1600 |
| PIN NO. | W | F | REEL /PCS | CARTON /R | CARTON /PCS |

| TOLERANCE | APPROVALS | DATE | TITLE | | |
|----------------------------|----------------------|------------------|---|--------------|------------------------|
| X. ±0.30 | DRAWN Roy Lin | 2023-06-09 | G861 SERIES, PROTECTED HEADER, 2.00 PITCH STRAIGHT, PCB MOUNT | | |
| X.X ±0.20 | CHECKED Joseph Jiang | 2023-06-09 | | | |
| X.XXX ±0.10 | APPROVED Roger Tsai | 2023-06-09 | UNIT mm | SIZE A3 | PART No. G861XXX1XS1HR |
| ANGULAR ±1° | DWG TYPE CUST DWG | PROJECT CODE PHD | SCALE NA | SHEET 4 OF 4 | DWG No. G861XXX1XS1HR |
| UNLESS OTHERWISE SPECIFIED | | | | | REV. E |

Amphenol®

Amphenol Corporation
Amphenol Taiwan Corporation

