

This document is the property of Amphenol Corporation and is delivered on the express condition that is not to be disclosed, reproduced or used, in whole or in part, for manufacture or sale by anyone other than Amphenol Corporation without its prior consent, and that no right is granted to disclose or to use any information in this document.

The marking on this product doesn't contain environmental hazardous materials per Material Specification 55-00259 for Sony GP compliant or per directive 2011/65/EU for RoHS compliant.



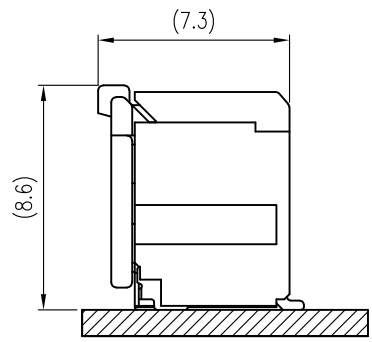
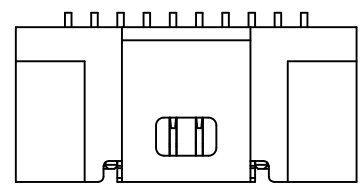
ORIGINAL



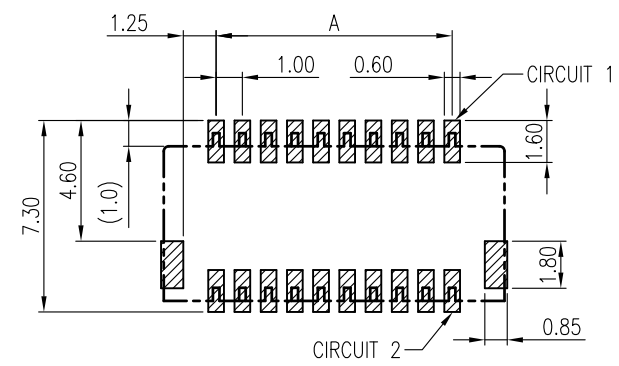
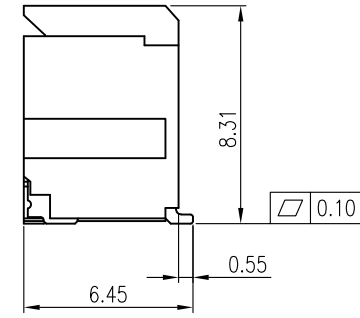
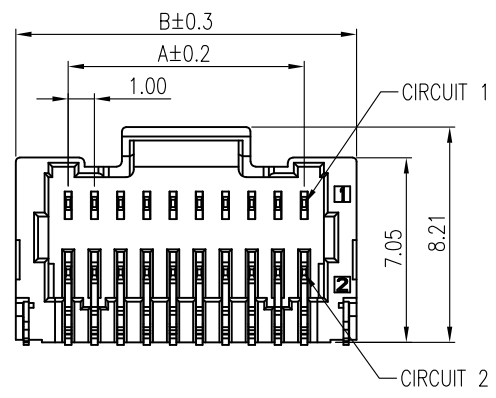
REVISIONS				
SYM	ECN No.	DESCRIPTION	DATE	APPROVED
A	NE-17234	RELEASE TO PRODUCTION	09/05/2017	Roger Tsai
B	NE-18153	ADDED 24POS. PKG	08/01/2018	Roger Tsai

NOTES:

- MATERIAL:
HOUSING: NYLON 4T, UL 94V-0, COLOR: OPTION.
CONTACT: COPPER ALLOY.
SOLDER TAB: COPPER ALLOY.
- FINISH:
CONTACT:
CONTACT AREA: SELECTIVE PLATING THICKNESS MIN.;
SOLDERING AREA: GOLD FLASH PLATING;
UNDER PLATING: NICKEL PLATING 50u" THICKNESS MIN. OVERALL.
SOLDER TAB: MATTE TIN PLATING 100u" THICKNESS MIN.;
NICKEL PLATING 50u" THICKNESS MIN. OVERALL.
- PACKING IS PER AMTA PACKING SPECIFICATION PKS-0001.
- THIS PRODUCT IS HALOGEN-FREE PRODUCT.
- PRODUCT SPECIFICATION REFER TO : PS-7623.
- RECOMMENDED MATING PART: G842AHXXT6EU/G842ACX1XT6EU.



MATING CONDITION (REF.)



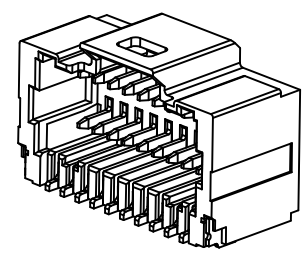
RECOMMENDED PCB LAYOUT
ALL TOLERANCE ARE ±0.05

PART NO. G846A XX 1 X 0 X T7HR

NO. OF POS. COLOR
0: NATURAL 1: BLACK

CONTACT FINISH
1: GOLD FLASH
2: 15μ" GOLD

PIN	DIM.(mm)	
	A	B
2x10	9.00	13.00
2x12	11.00	15.00
2x15	14.00	18.00
2x20	19.00	23.00
2x25	24.00	28.00



TOLERANCE		APPROVALS		DATE	TITLE		Amphenol®	
X.		DRAWN Aqua Chou		08/01/2018	G846A SERIES, WTB CONN		Amphenol Corporation	
X.X	±0.30	CHECKED Karen Su		08/01/2018	1.00 PITCH, DUAL ROWS,		Amphenol Taiwan Corporation	
X.XX	±0.20	APPROVED Roger Tsai		08/01/2018	R/A, SMT TYPE		PART No. G846AXX1X0XT7HR	
X.XXX	±0.10	DWG TYPE CUST DWG		PROJECT CODE BHD	UNIT mm	SIZE A3	DWG No. G846AXX1X0XT7HR	
ANGULAR	±1°	UNLESS OTHERWISE SPECIFIED			SCALE NA	SHEET 1 OF 2	REV. B	

This document is the property of Amphenol Corporation and is delivered on the express condition that is not to be disclosed, reproduced or used, in whole or in part, for manufacture or sale by anyone other than Amphenol Corporation without its prior consent, and that no right is granted to disclose or to use any information in this document.

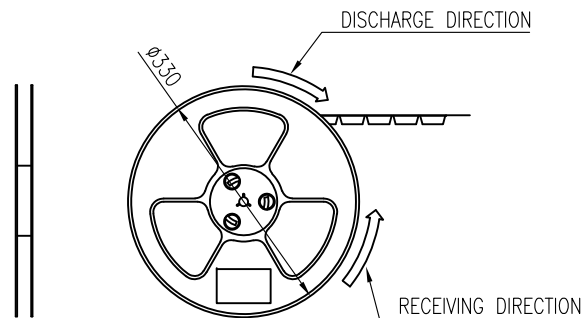
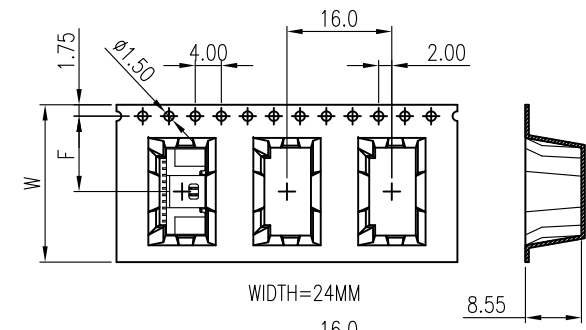
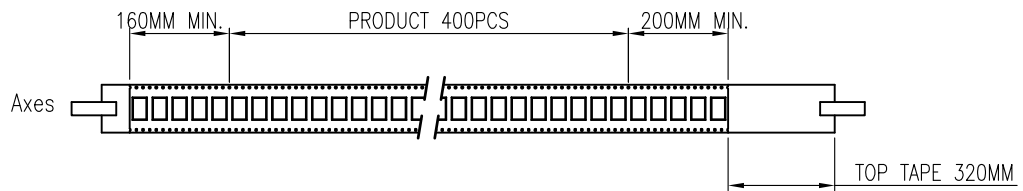
The marking on this product doesn't contain environmental hazardous materials per Material Specification SS-00259 for Sony GP compliant or per directive 2011/65/EU for RoHS compliant.



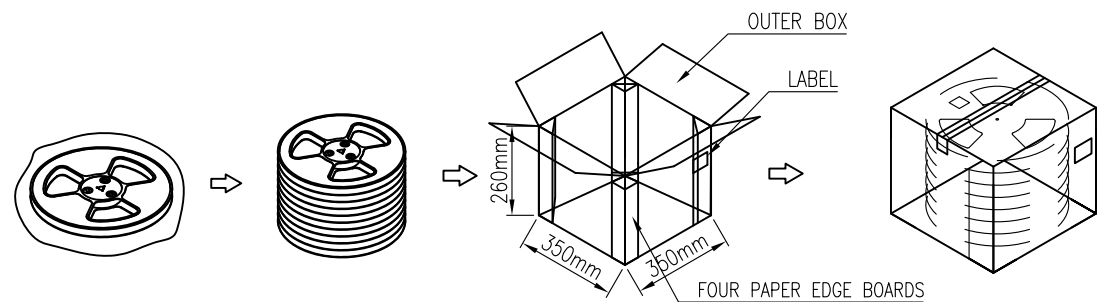
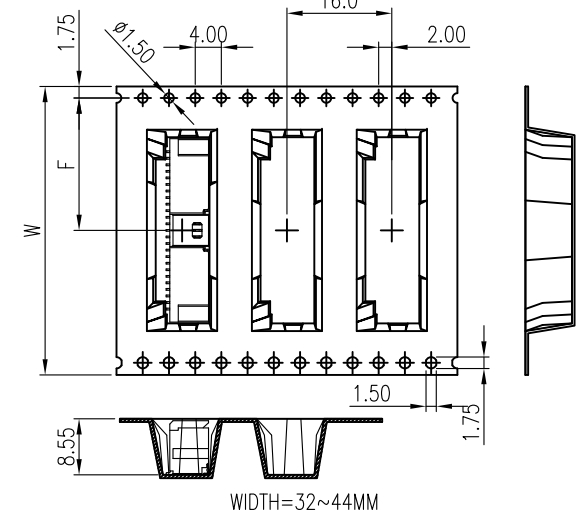
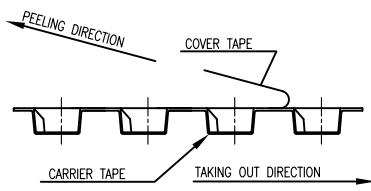
ORIGINAL



REVISIONS				
SYM	ECN No.	DESCRIPTION	DATE	APPROVED
A	NE-17234	RELEASE TO PRODUCTION	09/05/2017	Roger Tsai
B	NE-18153	ADDED 24POS. PKG	08/01/2018	Roger Tsai



COVER TAPE PEEL STRENGTH:20~120g
PEEL SPEED:300mm/minute



20X2=40/25X2=50	44	20.20	400	5R	2000
12X2=24/15X2=30	32	14.20	400	6R	2400
10X2=20	24	11.50	400	8R	3200
PIN NO.	W	F	REEL /PCS	CARTON /R	CARTON /PCS

TOLERANCE		APPROVALS		DATE	TITLE		Amphenol®								
X.		DRAWN		Aqua Chou	08/01/2018	G846A SERIES, WTB CONN 1.00 PITCH, DUAL ROWS, R/A, SMT TYPE		Amphenol Corporation Amphenol Taiwan Corporation							
X.X	±0.30	CHECKED		Karen Su	08/01/2018										
X.XX	±0.20	APPROVED		Roger Tsai	08/01/2018										
X.XXX	±0.10	ANGULAR		±1°		UNIT		mm	SIZE	A3	PART No.	G846AXX1X0XT7HR			
UNLESS OTHERWISE SPECIFIED		DWG TYPE		CUST DWG	PROJECT CODE	BHD	SCALE		NA	SHEET	2 OF 2	DWG No.	G846AXX1X0XT7HR	REV.	B

