

GROUP IX



EXPORT MODEL

190/200/208/220 X 380/400/416/440 PRIMARY VOLTS

120/240 SECONDARY VOLTS — 1Ø, 50/60 Hz

kVA	CATALOG NO.	APPROX. DIMENSIONS Inches (Cm.)			APPROX. SHIP WEIGHT Lbs. (Kg.)	TYPE MTG. W – Wall F – Floor	KNOCKOUTS Inches (Cm.)	WEATHER SHIELD P/N	Wiring Diagrams & Design Figures Begin on Page 154
		HEIGHT	WIDTH	DEPTH					
* 1.0	TF217437S	10.50 (26.7)	5.50 (14.0)	5.13 (13.0)	24 (10.9)	W	0.50-0.75 (1.3-1.9)	NA	14-B
* 2.0	TF217439S	13.00 (33.0)	5.50 (14.0)	5.13 (13.0)	38 (17.2)	W	0.50-0.75 (1.3-1.9)	NA	14-B
* 3.0	TF249873S	11.50 (29.2)	10.31 (26.2)	7.13 (18.1)	55 (24.9)	W	0.75-1.25 (1.9-3.2)	NA	14-C
* 5.0	TF252520S	14.38 (36.5)	10.31 (26.2)	7.13 (18.1)	75 (34.0)	W	0.75-1.25 (1.9-3.2)	NA	14-C
* 7.5	TF2-52794S	15.19 (38.6)	13.50 (34.3)	10.84 (27.5)	115 (52.2)	W	0.75-1.25 (1.9-3.2)	NA	14-D
* 10.0	TF252795S	15.19 (38.6)	13.50 (34.3)	10.84 (27.5)	125 (56.7)	W	0.75-1.25 (1.9-3.2)	NA	14-D
* 15.0	TF252796S	16.94 (43.0)	14.12 (35.9)	11.59 (29.4)	170 (77.1)	W	1.00-1.50 (2.5-3.8)	NA	14-D
* 25.0	TF252797S	18.44 (46.8)	16.13 (41.0)	13.34 (33.9)	300 (136.0)	W	1.00-1.50 (2.5-3.8)	NA	14-D
37.5	TF269218S①	25.48 (64.5)	24.39 (62.0)	19.37 (49.2)	285 (129.0)	F	NA	WSA1	15-E
50.0	TF269219S①	29.41 (74.7)	28.15 (71.5)	22.37 (56.8)	380 (172.0)	F	NA	WSA2	15-E
75.0	TF269220S①	35.47 (91.2)	31.90 (81.0)	26.88 (68.3)	445 (201.8)	F	NA	WSA3	15-E
100.0	TF2A69221S①	41.52 (106.4)	32.90 (83.6)	29.87 (75.9)	525 (238.0)	F	NA	WSA4	15-E

* CE Marked

GROUP X

EXPORT MODEL②

190/208/220/240 x 380/416/440/480 PRIMARY VOLTS — 120/240 SECONDARY VOLTS — 1Ø, 50/60 Hz

kVA	CATALOG NO.	APPROX. DIMENSIONS Inches (Cm.)			APPROX. SHIP WEIGHT Lbs. (Kg.)	TYPE MTG. W – Wall F – Floor	KNOCKOUTS Inches (Cm.)	WEATHER SHIELD P/N	Wiring Diagrams & Design Figures Begin on Page 154
		HEIGHT	WIDTH	DEPTH					
* 1.0	TF279260S	10.50 (26.7)	5.50 (14.0)	5.13 (13.0)	24 (10.9)	W	0.50-0.75 (1.3-1.9)	NA	64-B
* 2.0	TF279261S	13.00 (33.0)	5.50 (14.0)	5.13 (13.0)	38 (17.2)	W	0.50-0.75 (1.3-1.9)	NA	64-B
* 3.0	TF279262S	11.50 (29.2)	10.31 (26.2)	7.13 (18.1)	55 (24.9)	W	0.75-1.25 (1.9-3.2)	NA	64-C
* 5.0	TF279263S	14.38 (36.5)	10.31 (26.2)	7.13 (18.1)	75 (34.0)	W	0.75-1.25 (1.9-3.2)	NA	64-C
* 7.5	TF279264S	15.19 (38.6)	13.50 (34.3)	10.84 (27.5)	115 (52.2)	W	0.75-1.25 (1.9-3.2)	NA	64-D
* 10.0	TF279265S	15.19 (38.6)	13.50 (34.3)	10.84 (27.5)	125 (56.7)	W	0.75-1.25 (1.9-3.2)	NA	64-D
* 15.0	TF279266S	16.94 (43.0)	14.12 (35.9)	11.59 (29.4)	170 (77.1)	W	1.00-1.50 (2.5-3.8)	NA	64-D
* 25.0	TF279267S	18.44 (46.8)	16.13 (41.0)	13.34 (33.9)	300 (136.1)	W	1.00-1.50 (2.5-3.8)	NA	64-D

* CE Marked

GROUP XI

EXPORT MODEL②

190/200/208/220 x 380/400/416/440 PRIMARY VOLTS — 110/220 SECONDARY VOLTS — 1Ø, 50/60 Hz

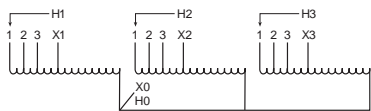
kVA	CATALOG NO.	APPROX. DIMENSIONS Inches (Cm.)			APPROX. SHIP WEIGHT Lbs. (Kg.)	TYPE MTG. W – Wall F – Floor	KNOCKOUTS Inches (Cm.)	WEATHER SHIELD P/N	Wiring Diagrams & Design Figures Begin on Page 154
		HEIGHT	WIDTH	DEPTH					
* 1.0	TF279300S	10.50 (26.7)	5.50 (14.0)	5.13 (13.0)	24 (10.9)	W	0.50-0.75 (1.3-1.9)	NA	65-B
* 2.0	TF279301S	13.00 (33.0)	5.50 (14.0)	5.13 (13.0)	38 (17.2)	W	0.50-0.75 (1.3-1.9)	NA	65-B
* 3.0	TF279302S	11.50 (29.2)	10.31 (26.2)	7.13 (18.1)	55 (24.9)	W	0.75-1.25 (1.9-3.2)	NA	65-C
* 5.0	TF279303S	14.38 (36.5)	10.31 (26.2)	7.13 (18.1)	75 (34.0)	W	0.75-1.25 (1.9-3.2)	NA	65-C
* 7.5	TF279304S	15.19 (38.6)	13.50 (34.3)	10.84 (27.5)	115 (52.2)	W	0.75-1.25 (1.9-3.2)	NA	65-D

* CE Marked

① Wall mounting brackets are available for these sizes, refer to page 165.

② Maximum exciting current 5% at 50 Hz.

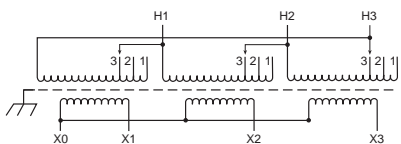
57 PRIMARY: 600 Volts
SECONDARY: 480 Volts
TAPS: 2, 5% BNFC



Primary Volts	Alt Rating	Connect Primary Lines To	Inter-Connect	Connect Secondary Lines To
600	480	H1, H2, H3	1	
570	456	H1, H2, H3	2	
540	432	H1, H2, H3	3	

Secondary Volts			
480	380		X1, X2, X3
277	220	1 phase	X1 to X0 X2 to X0 X3 to X0

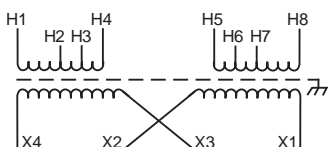
60 PRIMARY: 208 Volts Delta
SECONDARY: 208Y/120 Volts
TAPS: 2-5% BNFC



Primary Volts	%	Connect Leads to Tap No.
208	100	1
198	95	2
187	90	3

Secondary Volts		
208		X1, X2, X3
120	1 phase	X1 & X0 X2 & X0 X3 & X0

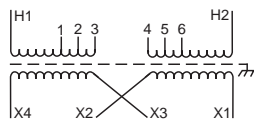
63 PRIMARY: 120/208/240/277 Volts
SECONDARY: 120/240 Volts



Primary Volts	Connect Primary Lines To	Inter-Connect	Connect Secondary Lines To
120	H1 & H8	H1 to H6 H3 to H8	
208	H1 & H8	H2 to H7	
240	H1 & H8	H3 to H6	
277	H1 & H8	H4 to H5	

Secondary Volts			
240		X2 to X3	X1 & X4
120/240		X2 to X3	X1, X3, X4
120		X1 to X3 X2 to X4	X1 & X4

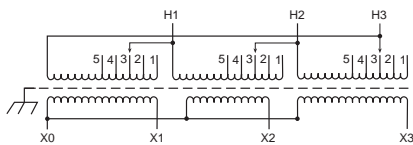
58 PRIMARY: 208 Volts
SECONDARY: 120/240 Volts
TAPS: 2, 5% BNFC



Primary Volts	Connect Primary Lines To	Inter-Connect	Connect Secondary Lines To
208	H1 & H2	3 to 4	
198	H1 & H2	2 to 5	
187	H1 & H2	1 to 6	

Secondary Volts			
240		X2 to X3	X1-X4
120/240		X2 to X3	X1-X2-X4
120		X1 to X3 X2 to X4	X1-X4

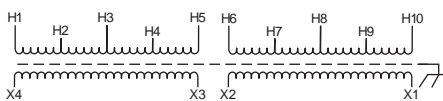
61 PRIMARY: 208 Volts Delta
SECONDARY: 208Y/120 Volts
TAPS: 2-2 1/2% ANFC and 2-2 1/2% BNFC



Primary Volts	%	Connect Leads to Tap No.
218	105	1
213	102.5	2
208	100	3
203	97.5	4
198	95	5

Secondary Volts		
208		X1, X2, X3
120	1 phase	X1 & X0 X2 & X0 X3 & X0

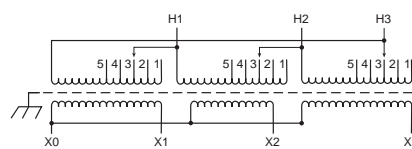
64 PRIMARY: 190/208/220/240 x
380/416/440/480 Volts
SECONDARY: 120/240 Volts



Primary Volts	Connect Primary Lines To	Inter-Connect	Connect Secondary Lines To
190	H1 & H7	H1 to H6 H2 to H7	
208	H1 & H8	H1 to H6 H3 to H8	
220	H1 & H9	H1 to H6 H4 to H9	
240	H1 & H10	H1 to H6 H5 to H10	
380	H1 & H7	H2 to H6	
416	H1 & H8	H3 to H6	
440	H1 & H9	H4 to H6	
480	H1 & H10	H5 to H6	

Secondary Volts			
240		X2 to X3	X1 - X4
120/240		X2 to X3	X1- X2 - X4
120		X1 to X3 X2 to X4	X1 - X4

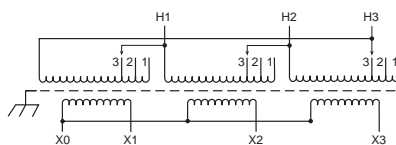
59 PRIMARY: 230 Volts Delta
SECONDARY: 230Y/133 Volts
TAPS: 2-2 1/2% ANFC and 2-2 1/2% BNFC



Primary Volts	%	Connect Leads to Tap No.
242	105	1
236	102.5	2
230	100	3
224	97.5	4
219	95	5

Secondary Volts		
230		X1, X2, X3
133	1 phase	X1 & X0 X2 & X0 X3 & X0

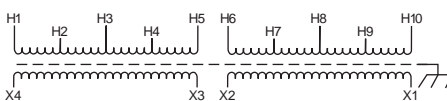
62 PRIMARY: 230 Volts Delta
SECONDARY: 230Y/133 Volts
TAPS: 1-5% ANFC and 1-5% BNFC



Primary Volts	%	Connect Leads to Tap No.
241	105	1
230	100	2
218	95	3

Secondary Volts		
230		X1, X2, X3
133	1 phase	X1 & X0 X2 & X0 X3 & X0

65 PRIMARY: 190/200/208/220 x
380/400/416/440 Volts
SECONDARY: 110/220 Volts



Primary Volts	Connect Primary Lines To	Inter-Connect	Connect Secondary Lines To
190	H1 & H7	H1 to H6 H2 to H7	
200	H1 & H8	H1 to H6 H3 to H8	
208	H1 & H9	H1 to H6 H4 to H9	
220	H1 & H10	H1 to H6 H5 to H10	
380	H1 & H7	H2 to H6	
400	H1 & H8	H3 to H6	
415	H1 & H9	H4 to H6	
440	H1 & H10	H5 to H6	

Secondary Volts			
220		X2 to X3	X1-X4
110/220		X2 to X3	X1-X2-X4
110		X1 to X3 X2 to X4	X1-X4