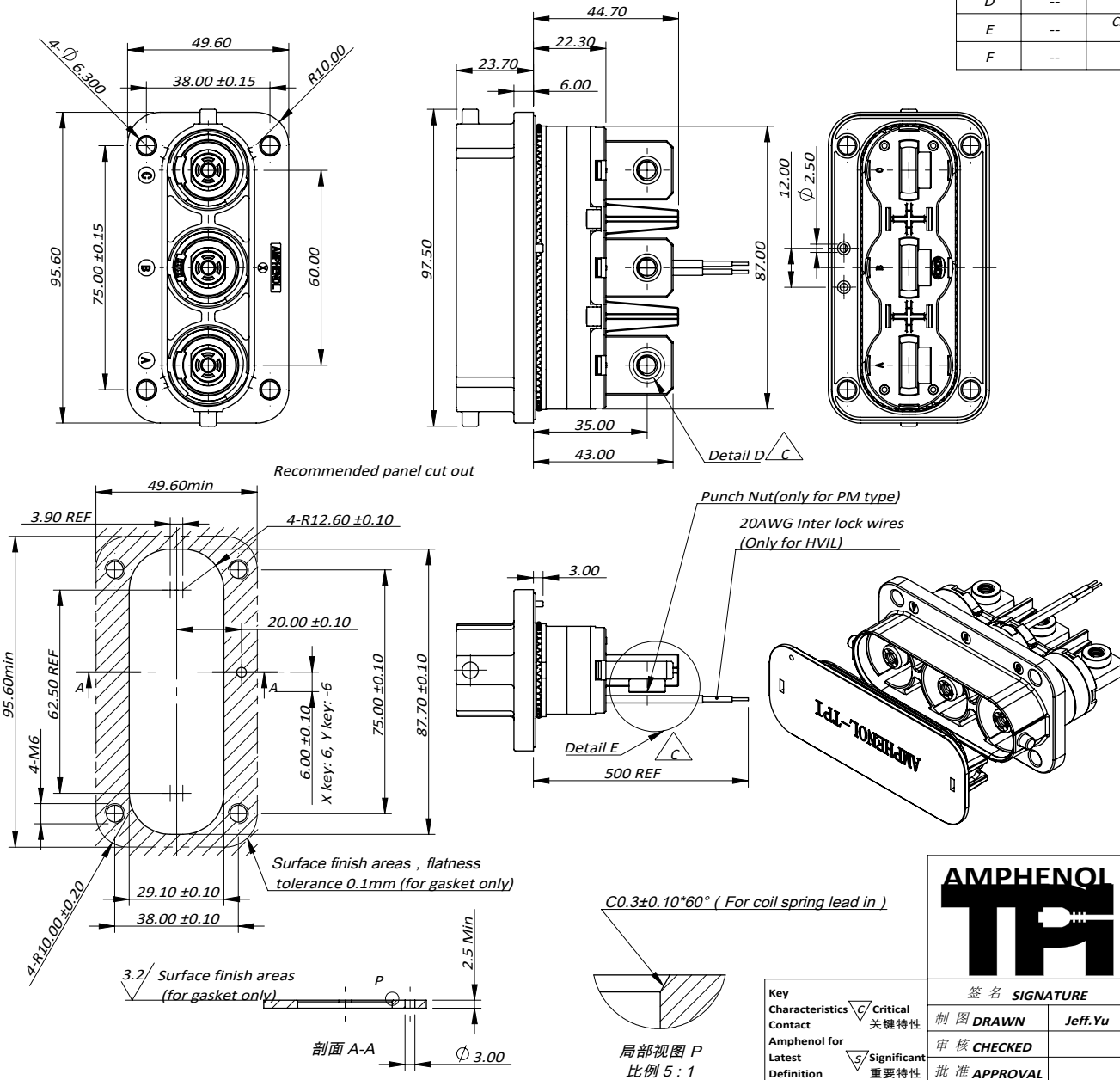


THIS DRAWING IS SUPPLIED FOR INFORMATION ONLY. DESIGN FEATURES, SPECIFICATIONS AND PERFORMANCE DATA SHOWN HEREON ARE THE PROPERTY OF THE AMPHENOL CORPORATION. NO RIGHTS OF REPRODUCTION ARE IMPLIED. ALL DIMENSIONS ARE SUBJECT TO NORMAL MANUFACTURING VARIATIONS.

CUSTOMER DRAWING

REVISIONS					
REV#	ECN#	REVISION ACTION	REV.BY:	APPR.BY:	DATE
A	--	INITIAL RELEASE	JX	JL	03/09/2020
B	--	Add H6/H8/PM8/M10 specifications and dust cap with o-ring	Star	JL	03/01/2021
C	--	Add detailed view of lug	Star	JL	04/19/2021
D	--	Change the temperature of technical points	Star	JL	01/25/2022
E	--	Change of operating temperature, voltage and dielectric withstanding voltage	JS	JL	08/09/2022
F	--	Change specification parameter	JY	JL	03/21/2023

- 规格参数 (Spec.):
- 工作温度 Operating temperature : $-40^{\circ}\text{C} \sim +125^{\circ}\text{C}$. $\triangle E$
 - 带高压互锁 Electrical interlock (HVIL).
 - 额定电流 Current rating:
Power: 300A; HVIL: 5A.
 - 额定电压 Operating voltage:
Power: 1500 VDC; Signal: 60 VDC. $\triangle E$
 - 耐电压 Dielectric withstanding voltage:
 - 与插座对插后, Pin与铁壳之间
When mated, between pin and metal shell: 8000 VDC. $\triangle E$
 - 与插座对插后, Pin与HVIL之间
When mated, between pin and HVIL: 8000 VDC. $\triangle E$
 - 与插座对插后, HVIL与铁壳之间
When mated, between HVIL and metal shell: 500 VDC.
 - 与插座对插前, 两个HVIL端子之间耐压
Before mating, between two HVIL terminals: 500 VDC.
 - 防护等级 Protection class: Mated-IP6k9k & IP67, unmated-IP2X.
 - 电磁屏蔽 360° full Shielding.
 - 机械寿命 Mating cycle: 100 Min.
 - 推荐法兰盘螺丝安装扭矩 Recommended Screw Assembly Torque on Flange : 6.2~7.6Nm
 - 推荐铜排安装扭矩 Recommended Fasten Torque on Lug:
M6: 3.6~4.4Nm, M8: 7.2~8.8Nm, M10: 17.1~20.9Nm
 - 镀灰锌/镀锌合金, 满足500H中性盐雾实验 Gray Zinc/Nickel(ZnNi) Plating. Rated at 500hours salt spray.
 - 产品满足RoHS和REACH要求. Parts must be RoHS and reach compliant. ∇
 - 绝缘体为140°RTI材料. The insulators are 140° RTI material. $\triangle E$
 - 绝缘材料满足UL94V-0. $\triangle E$
- The insulation material meets the requirements of UL94V-0.



订购信息 Ordering Information
 PL083 X - 30 1 - 10 PM 6 - 2

Key and Color "X", Orange "Y", Black	HVIL "0", NO HVIL "1", With HVIL	Hole Type "D", through hole "M", thread hole "H", slot hole "PM", punched nut	Hole Size
---	---	--	------------------

AMPHENOL

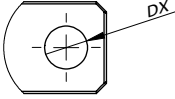
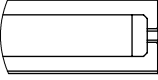
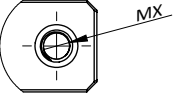
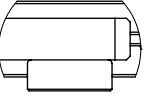
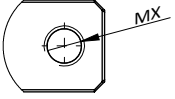
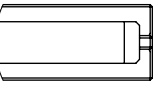
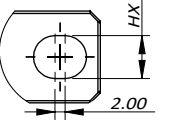
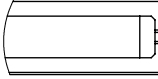
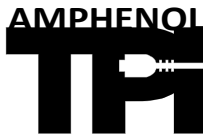
TR

Amphenol Technical Products International Asia.

第三角投影 THIRD ANGLE PROJECTION	页面 SHEET	幅面 SIZE	版次 REV.	比例 SCALE	PART NAME: PL10mm G2 3POS Rcpt Lug
	1 OF 2	A4	F	--	

签名 SIGNATURE	日期 DATE	UNLESS OTHERWISE SPECIFIED 1) All dimensions are in metric (mm). 2) Tolerances are as follows: 1.PL DEC ± 1.00 2.PL DEC ± 0.50 3.PL DEC ± 0.20 Angles ±1°	DWG NO: PL083X-30X-10XX-2
制图 DRAWN	Jeff. Yu		
审核 CHECKED			CUST PART #
批准 APPROVAL			

THIS DRAWING IS SUPPLIED FOR INFORMATION ONLY. DESIGN FEATURES, SPECIFICATIONS AND PERFORMANCE DATA SHOWN HEREON ARE THE PROPERTY OF THE AMPHENOL CORPORATION. NO RIGHTS OF REPRODUCTION ARE IMPLIED. ALL DIMENSIONS ARE SUBJECT TO NORMAL MANUFACTURING VARIATIONS.

1	2	3	4	5	6	7	8									
Table 1					REVISIONS											
					REV#	ECN#	REVISION ACTION	REV.BY:	APPR.BY:	DATE						
					A	--	INITIAL RELEASE	JX	JL	03/09/2020						
					B	--	Add H6/H8/PM8/M10 specifications and dust cap with o-ring	Star	JL	03/01/2021						
					C	--	Add detailed view of lug	Star	JL	04/19/2021						
					D	--	Change the temperature of technical points	Star	JL	01/25/2022						
					E	--	Change of operating temperature, voltage and dielectric withstanding voltage	JS	JL	08/09/2022						
					F	--	Change specification parameter	JY	JL	03/21/2023						
P/N 料号		Model No. 型号														
AC-HA011048		PL083X-300-10M6-2														
AC-HA011049		PL083Y-300-10M6-2														
AC-HA011050		PL083X-300-10M8-2														
AC-HA011051		PL083Y-300-10M8-2														
AC-HA011054		PL083X-300-10D6-2														
AC-HA011055		PL083Y-300-10D6-2														
AC-HA011056		PL083X-300-10D8-2														
AC-HA011057		PL083Y-300-10D8-2														
AC-HA011058		PL083X-300-10D10-2														
AC-HA011059		PL083Y-300-10D10-2														
AC-HA011060		PL083X-301-10M6-2														
AC-HA011061		PL083Y-301-10M6-2														
AC-HA011062		PL083X-301-10M8-2														
AC-HA011063		PL083Y-301-10M8-2														
AC-HA011066		PL083X-301-10D6-2														
AC-HA011067		PL083Y-301-10D6-2														
AC-HA011068		PL083X-301-10D8-2														
AC-HA011069		PL083Y-301-10D8-2														
AC-HA011070		PL083X-301-10D10-2														
AC-HA011071		PL083Y-301-10D10-2														
AC-HA011981		PL083X-300-10PM6-2														
AC-HA011982		PL083Y-300-10PM6-2														
AC-HA011983		PL083X-301-10PM6-2														
AC-HA011984		PL083Y-301-10PM6-2														
AC-HA017473		PL083X-300-10H6-2														
AC-HA017474		PL083Y-300-10H6-2														
AC-HA017475		PL083X-300-10H8-2														
AC-HA017476		PL083Y-300-10H8-2														
AC-HA017477		PL083X-300-10PM8-2														
AC-HA017478		PL083Y-300-10PM8-2														
AC-HA017479		PL083X-301-10H6-2														
AC-HA017480		PL083Y-301-10H6-2														
AC-HA017481		PL083X-301-10H8-2														
AC-HA017482		PL083Y-301-10H8-2														
AC-HA017483		PL083X-301-10PM8-2														
AC-HA017484		PL083Y-301-10PM8-2														
AC-HA011052		PL083X-300-10M10-2														
AC-HA011053		PL083Y-300-10M10-2														
AC-HA011064		PL083X-301-10M10-2														
AC-HA011065		PL083Y-301-10M10-2														
				△ C	  <table border="1" style="margin-left: auto; margin-right: auto;"> <thead> <tr> <th>Model No</th> <th>The hole size DX</th> </tr> </thead> <tbody> <tr> <td>PL083X-30X-10D10-2</td> <td>∅ 10.50 ± 0.10</td> </tr> <tr> <td>PL083X-30X-10D8-2</td> <td>∅ 8.50 ± 0.10</td> </tr> <tr> <td>PL083X-30X-10D6-2</td> <td>∅ 6.50 ± 0.10</td> </tr> </tbody> </table>			Model No	The hole size DX	PL083X-30X-10D10-2	∅ 10.50 ± 0.10	PL083X-30X-10D8-2	∅ 8.50 ± 0.10	PL083X-30X-10D6-2	∅ 6.50 ± 0.10	
Model No	The hole size DX															
PL083X-30X-10D10-2	∅ 10.50 ± 0.10															
PL083X-30X-10D8-2	∅ 8.50 ± 0.10															
PL083X-30X-10D6-2	∅ 6.50 ± 0.10															
				△ C	  <table border="1" style="margin-left: auto; margin-right: auto;"> <thead> <tr> <th>Model No</th> <th>Thread hole size MX</th> </tr> </thead> <tbody> <tr> <td>PL083X-30X-10PM6-2</td> <td>M6</td> </tr> <tr> <td>PL083X-30X-10PM8-2</td> <td>M8</td> </tr> </tbody> </table>			Model No	Thread hole size MX	PL083X-30X-10PM6-2	M6	PL083X-30X-10PM8-2	M8			
Model No	Thread hole size MX															
PL083X-30X-10PM6-2	M6															
PL083X-30X-10PM8-2	M8															
				△ C	  <table border="1" style="margin-left: auto; margin-right: auto;"> <thead> <tr> <th>Model No</th> <th>Thread hole size MX</th> </tr> </thead> <tbody> <tr> <td>PL083X-30X-10M10-2</td> <td>M10</td> </tr> <tr> <td>PL083X-30X-10M8-2</td> <td>M8</td> </tr> <tr> <td>PL083X-30X-10M6-2</td> <td>M6</td> </tr> </tbody> </table>			Model No	Thread hole size MX	PL083X-30X-10M10-2	M10	PL083X-30X-10M8-2	M8	PL083X-30X-10M6-2	M6	
Model No	Thread hole size MX															
PL083X-30X-10M10-2	M10															
PL083X-30X-10M8-2	M8															
PL083X-30X-10M6-2	M6															
				△ C	  <table border="1" style="margin-left: auto; margin-right: auto;"> <thead> <tr> <th>Model No</th> <th>Slot hole size HX</th> </tr> </thead> <tbody> <tr> <td>PL083X-30X-10H10-2</td> <td>10.50 ± 0.10</td> </tr> <tr> <td>PL083X-30X-10H8-2</td> <td>8.50 ± 0.10</td> </tr> <tr> <td>PL083X-30X-10H6-2</td> <td>6.50 ± 0.10</td> </tr> </tbody> </table>			Model No	Slot hole size HX	PL083X-30X-10H10-2	10.50 ± 0.10	PL083X-30X-10H8-2	8.50 ± 0.10	PL083X-30X-10H6-2	6.50 ± 0.10	
Model No	Slot hole size HX															
PL083X-30X-10H10-2	10.50 ± 0.10															
PL083X-30X-10H8-2	8.50 ± 0.10															
PL083X-30X-10H6-2	6.50 ± 0.10															
								Amphenol Technical Products International Asia.								
					第三角投影 THIRD ANGLE PROJECTION		页面 SHEET	幅面 SIZE	版次 REV.	比例 SCALE	PART NAME: PL10mm G2 3POS Rcpt Lug					
					2 OF 2		A4	F	--							
					签名 SIGNATURE 日期 DATE		UNLESS OTHERWISE SPECIFIED 1) All dimensions are in metric (mm). 2) Tolerances are as follows: 1.PL DEC ± 1.00 2.PL DEC ± 0.50 3.PL DEC ± 0.20			DWG NO: PL083X-30X-10XX-2						
					制图 DRAWN 审核 CHECKED 批准 APPROVAL		Jeff.Yu 03/21/2023			CUST PART #						
					关键特性 Significant 重要特性		Angles ±1°			CUST REV.						